

# Guidance

## ~~RIIO-ED2 Regulatory Instructions and Guidance: Annex G – Connections v2.0~~ RIIO-ED2 Regulatory Instructions and Guidance: Annex G – Connections v2.1

Publication date:	<del>10 April 2025</del> 02 March 2026
-------------------	--

Contact:	RIIO-ED Team
----------	--------------

Team:	RIIO-ED Team
-------	--------------

Telephone:	020 7901 7000
------------	---------------

Email:	<a href="mailto:RIIOED2@ofgem.gov.uk">RIIOED2@ofgem.gov.uk</a>
--------	--

RIIO-ED2 is the price control for electricity distribution network operators (DNOs) from 1 April 2023 to 31 March 2028.

This document is part of the regulatory instructions and guidance (RIGs) for RIIO-ED2.

© Crown copyright 2026

The text of this document may be reproduced (excluding logos) under and in accordance with the terms of the [Open Government Licence](#).

Without prejudice to the generality of the terms of the Open Government Licence the material that is reproduced must be acknowledged as Crown copyright and the document title of this document must be specified in that acknowledgement.

Any enquiries related to the text of this publication should be sent to Ofgem at:

10 South Colonnade, Canary Wharf, London, E14 4PU.

This publication is available at [www.ofgem.gov.uk](http://www.ofgem.gov.uk). Any enquiries regarding the use and re-use of this information resource should be sent to: [psi@nationalarchives.gsi.gov.uk](mailto:psi@nationalarchives.gsi.gov.uk)

**Guidance – ~~RIIO-ED2 Regulatory Instructions and Guidance: Annex G – Connections~~**  
~~Connections v2.0~~**RIIO-ED2 Regulatory Instructions and Guidance: Annex**  
**G – Connections v2.1**

---

## Contents

<b>RIIO-ED2 Regulatory Instructions and Guidance: Annex G – Connections v2.1 .....</b>	<b>1</b>
<b>1. Introduction.....</b>	<b>8</b>
Scope of this document.....	8
Instructions for completing common worksheets.....	9
<b>2. Instructions for completing the Connections Reporting Pack .....</b>	<b>10</b>
<b>Introduction.....</b>	<b>10</b>
<b>General instructions and guidance .....</b>	<b>10</b>
Metered Connection Categories .....	11
<b>CC1 – Summary.....</b>	<b>13</b>
Reconciliation to the Costs, Volumes and Revenue Pack.....	14
<b>CC2 – Metered in-year .....</b>	<b>15</b>
Connections – Sole Use Funded.....	15
Connections Reinforcement.....	16
Direct Costs .....	16
Indirect Costs .....	16
MPANs connected .....	17
Income – direct.....	17
Income – indirect.....	17
Indicative Margins.....	17
<b>CC3 – Unmetered in-year.....</b>	<b>17</b>
Unmetered Work .....	18
<b>CC4 – Completed summary .....</b>	<b>19</b>
Connection Category .....	19
Number of Connections .....	20
Number of Projects .....	20
Previously closed job .....	20
Final Contracted Value Direct Cost excluding Margin (£m).....	21
Actual Direct Costs .....	21
Final Contracted Direct Costs excluding Margin – Connections – Sole Use Funded – (£m) .....	21
Actual Direct Costs – Connections – Sole Use Funded (£m) .....	21
Over/under recovery on Sole Use Funded Connections – direct costs.....	21
Final Contracted Direct Costs – Connections Reinforcement – Customer Funded (£m) .....	22
Actual Direct Costs – Connections Reinforcement – Customer Funded – (£m) .....	22

**Guidance – RIIO-ED2 Regulatory Instructions and Guidance: Annex G – Connections**  
**Connections v2.0**  
**RIIO-ED2 Regulatory Instructions and Guidance: Annex**  
**G – Connections v2.1**

Over/under recovery on element of connection that is customer funded direct costs – (%) .....	22
Final Contracted Direct Costs – Connections Reinforcement – DUoS Funded – (£m) ..	22
Actual Direct Costs – Connections Reinforcement – DUoS Funded – (£m) .....	23
Over/under recovery on element of connection – DUoS funded direct costs – (%) .....	23
Total Direct Costs .....	23
Final Contracted direct costs excluding Margin – (£m) .....	23
Final Contracted actual costs excluding Margin – (£m) .....	23
Total direct costs - over/under recovery – (%) .....	23
Applied Margin .....	23
Other Charges .....	24
Total Charge to Customer .....	24
<b>CC5 – Annual quotations issued .....</b>	<b>24</b>
Number of Offers .....	25
Connections Reinforcement – Sole Use Funded – Contestable – Total Cost £m .....	26
Connections Reinforcement – Sole Use Funded – Non-Contestable – Total Cost £ .....	26
Connections Reinforcement – Customer funded - Total Cost £m .....	26
Connections Reinforcement – DUoS funded - Total Cost £m .....	26
Other Charges £m .....	27
<b>CC6 – Annual out of area connections .....</b>	<b>27</b>
<b>CC7 – Direct Related Party Margin (RPM) .....</b>	<b>27</b>
<b>CC8 – Time to Connect and Time to Quote .....</b>	<b>28</b>
Projects that are included in the incentive .....	29
Projects that are not included in the incentive .....	29
Average Time to Quote .....	30
Application Received Date .....	31
Re-quotes and changes to requirements .....	32
Working Day and reporting performance against timescales .....	33
Average Time to Connect .....	34
Working Day and reporting performance against timescales .....	35
<b>CC9 – Major Connections Customer Satisfaction Survey .....</b>	<b>36</b>
<b>CC10 – Low carbon technology (LCT) connections .....</b>	<b>37</b>
<b>3. Guidance for completing the SLC 15 and SLC 15A reporting packs .....</b>	<b>41</b>
<b>Introduction .....</b>	<b>41</b>
SLC 15 (Standards for the provision of Non-Contestable Connection Services) .....	41
SLC 15A (Connection Policy and Connection Performance) .....	41

**Guidance – RIIO-ED2 Regulatory Instructions and Guidance: Annex G – Connections**  
[Connections v2.0](#)  
[RIIO-ED2 Regulatory Instructions and Guidance: Annex G – Connections v2.1](#)

---

<b>Compliance .....</b>	<b>43</b>
<a href="#">SLC 15 .....</a>	<a href="#">43</a>
<a href="#">SLC 15A .....</a>	<a href="#">43</a>
<b>Reporting performance .....</b>	<b>43</b>
<b>Working Day and reporting performance against timescales .....</b>	<b>44</b>
<b>Payments .....</b>	<b>46</b>
<a href="#">Application of Payments.....</a>	<a href="#">46</a>
<a href="#">Payment standard.....</a>	<a href="#">46</a>
<a href="#">Example .....</a>	<a href="#">46</a>
<a href="#">Payment in relation to commencement, completion and energisation standards .....</a>	<a href="#">47</a>
<a href="#">SLC 15 and DG Standard payments (voluntary) .....</a>	<a href="#">47</a>
<b>Application of the standards.....</b>	<b>49</b>
<a href="#">The Regulations (demand connections standards) .....</a>	<a href="#">49</a>
<a href="#">The DG Standards Direction (generation connections standards).....</a>	<a href="#">50</a>
<a href="#">SLC 15 (non-contestable connections standards) .....</a>	<a href="#">51</a>
<b>Changes of classification .....</b>	<b>52</b>
<b>Application where a service combines demand and generation .....</b>	<b>54</b>
<b>Agreement of dates .....</b>	<b>54</b>
<a href="#">Agreed date examples .....</a>	<a href="#">56</a>
<b>4. Exemptions and Extensions (SLC 15 and SLC 15A) .....</b>	<b>59</b>
<b>Exemptions.....</b>	<b>59</b>
<b>Extensions of Time .....</b>	<b>64</b>
<b>Conditions precedent.....</b>	<b>70</b>
<a href="#">Cancellation of works by the Customer .....</a>	<a href="#">71</a>
<a href="#">Cancellation by the Electricity Distributor .....</a>	<a href="#">71</a>
<b>5. Minimum and additional information (SLC 15 and SLC 15A) .....</b>	<b>73</b>
<b>Minimum information.....</b>	<b>73</b>
<b>Minimum information for metered and DG connections standards.....</b>	<b>74</b>
<b>Minimum information for unmetered standards .....</b>	<b>79</b>
<b>Additional information .....</b>	<b>80</b>
<b>6. SLC 12 connections reporting .....</b>	<b>82</b>
<b>Send us your feedback .....</b>	<b>83</b>
<b>7. Appendix 1 - Overview of SLC 15 and 15A Standards of Performance .....</b>	<b>84</b>

**Guidance – ~~RIIO-ED2 Regulatory Instructions and Guidance: Annex G – Connections~~  
~~Connections v2.0~~RIIO-ED2 Regulatory Instructions and Guidance: Annex  
G – Connections v2.1**

<b>Tables of Standards .....</b>	<b>84</b>
<b>Tables of SLC 15A standards.....</b>	<b>88</b>
<b>Tables of DG standards .....</b>	<b>100</b>
<b>Table of SLC 15 standards .....</b>	<b>105</b>
<b>8. Appendix 2 - Overview of metered and distributed generation connection standards .....</b>	<b>114</b>
<b>Budget estimates .....</b>	<b>114</b>
<b>Quotations.....</b>	<b>114</b>
Application of quotation standards for abnormal loads .....	115
SLC 15 POC information.....	116
<b>9. Appendix 3 - Overview of other metered and other metered distributed generation connection standards .....</b>	<b>117</b>
<b>Customer contact .....</b>	<b>117</b>
<b>Design Submissions - SLC 15 .....</b>	<b>118</b>
<b>Commencement of work .....</b>	<b>118</b>
<b>Completion of works .....</b>	<b>119</b>
<b>Energisation of works .....</b>	<b>119</b>
<b>SLC 15 final works and phased energisation .....</b>	<b>120</b>
Completion of final works.....	120
Phased energisation.....	121
<b>10. Appendix 4 - Unmetered connections .....</b>	<b>122</b>
<b>Quotations.....</b>	<b>122</b>
<b>Unmetered (UMS) faults .....</b>	<b>122</b>
<b>Emergency response.....</b>	<b>123</b>
<b>High priority fault repair.....</b>	<b>123</b>
<b>Single unit and multiple unit fault repairs .....</b>	<b>123</b>
<b>New works order .....</b>	<b>123</b>
115% Volume Rate (Applicable to Unmetered New Works only) .....	125
<b>11. Appendix 5 - Overview of the Quotation Accuracy Scheme.....</b>	<b>127</b>
<b>12. Appendix 6 - SLC 15A quarterly reporting template guidance .....</b>	<b>128</b>
Reporting code (ECGS no) .....	128
Guaranteed Standard classification .....	128
Number of Passes.....	128

**Guidance – ~~RIIO-ED2 Regulatory Instructions and Guidance: Annex G – Connections~~  
Connections v2.0**  
**~~RIIO-ED2 Regulatory Instructions and Guidance: Annex G – Connections v2.1~~**

---

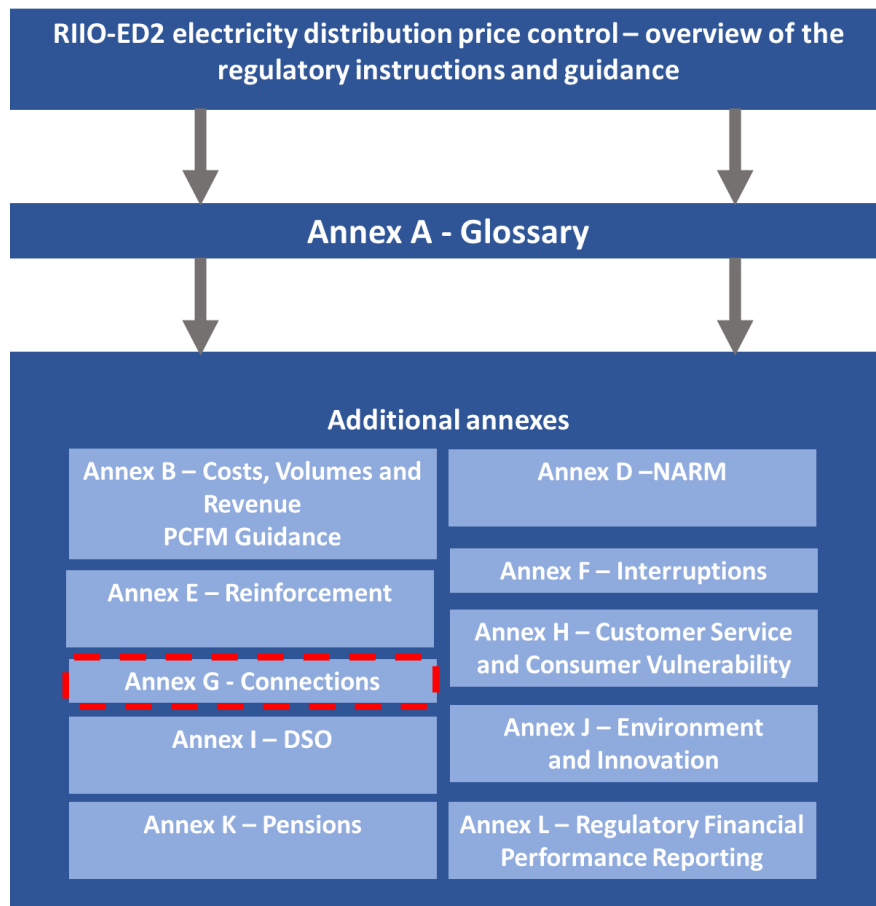
Number of Exemptions .....	128
Number of Failures .....	129
Total .....	129
Value of penalties incurred (£) .....	129
Pass rate .....	129
Quotation Accuracy Scheme .....	129
Payment Made (£) .....	130
Failure to make payment .....	130
<b>13. Appendix 7 - SLC 15 quarterly reporting template guidance.....</b>	<b>131</b>
Number provided within timescale.....	131
Number of exemptions .....	131
<b>14. Appendix 8 – Treatment of connection reinforcement .....</b>	<b>133</b>
Scenario 1 .....	133
Scenario 2 .....	133
Scenario 3 .....	134
Scenario 4 .....	135
Scenario 5 .....	136

# 1. Introduction

## Scope of this document

- 1.1 This document is part of the regulatory instructions and guidance (RIGs) for RIIO-ED2. The term RIGs refers to a collection of documents - our instructions and guidance, and the reporting packs and commentaries the electricity distribution network operators (DNOs) have to fill out.
- 1.2 Figure 1.1 shows all the instructions and guidance documents for the RIIO-ED2 RIGs. This document, circled in Figure 1.1, is one of a series of annexes containing instructions and guidance. It provides DNOs with information on how to fill in the reporting packs related to connections and the Connections Commentary that they are required to submit to us.

**Figure 1.1: Map of the RIIO-ED2 instructions and guidance**





**Guidance – ~~RIIO-ED2 Regulatory Instructions and Guidance: Annex G – Connections~~  
~~Connections v2.0~~RIIO-ED2 Regulatory Instructions and Guidance: Annex  
 G – Connections v2.1**

---

1.3 This document should be read in conjunction with:

- the RIIO-ED2 – Overview of the Regulatory Instructions and Guidance document
- the Major Connections Governance Document and the associated commentary named “Connections Commentary”.
- Annex A – Glossary for the regulatory instructions and guidance
- the associated Microsoft® Excel reporting packs named:
  - “Connections Reporting Pack”
  - “SLC 12, 15 and 15A Reporting Pack”

1.4 Work is underway to finalise monthly reporting of DNO connection activity, in support of wider reforms to the connection process. Ofgem intends to incorporate this monthly reporting into the RIGs in due course and will work with DNOs over the coming months to develop draft Guidance that will ultimately be incorporated into this Annex G and finalise reporting tables. We would expect to consult on any such changes later in 2023.

## **Instructions for completing common worksheets**

1.5 The Changes Log must be used by the DNOs to record any amendments (formulae or presentation) that are made to the reporting pack, including the date those changes were made. Ofgem will also record any changes made to the reporting pack in this worksheet.

## 2. Instructions for completing the Connections Reporting Pack

### Introduction

- 2.1 The purpose of the information collected in the Connections Reporting Pack is to provide a framework for the collection and provision of accurate and consistent connections data from DNOs.
- 2.2 Values must be entered in the column corresponding to the Regulatory Year under report and any previous Regulatory Years. For example, data reported for Regulatory Year 2023-24 should be reported under the column headed "2024".

### General instructions and guidance

- 2.3 Within the Connections Reporting Pack, the term Connection refers to the provision or upgrading of individual Meter Point Administration Numbers (MPANs), points of connection or unmetered connections to end customers. All provisions of new MPANs/points of connection or upgrades of existing MPANs/points of connection must be referred to as Connections within the annual reporting. The provision of each of these Connections must be delivered via a Connection Project. This refers to each project covered by a connection quotation offered to a customer. It is the scope of work within a particular Connection Project that determines which Connections Category it is classified as belonging to.
- 2.4 As defined in the glossary, Upgrading Connection Projects refers to Connection Projects that involve only the upgrading of existing MPANs/points of connection without the provision of new MPANs/points of connection. Within the RIGs, the upgrading of existing MPANs/points of connection must refer to projects that:
- increase the available capacity to an existing MPAN/point of connection of the DNO network, or

**Guidance** – [RIIO-ED2 Regulatory Instructions and Guidance: Annex G – Connections v2.0](#)  
[RIIO-ED2 Regulatory Instructions and Guidance: Annex G – Connections v2.1](#)

- allow an existing MPAN/point of connection to be able to feed a supply of electricity to/from a DNO network.
- 2.5 Where an application for a connection includes any disconnections necessary to facilitate the new connection this work would be included as part of a Connection Project. Where the customer makes a separate request for an unmetered disconnection the DNO should identify in the Commentary if these are reported as a Connection Project in the pack.
- 2.6 All costs reported in the worksheets must be completed in pounds million (to two decimal places).
- 2.7 Income should be entered as negative values throughout.

## Metered Connection Categories

- 2.8 The same 15 Metered Connection Categories, listed in Table 2.1, are used throughout the Connections Reporting Pack. These are defined in Annex A – Glossary under the prefix “Connection Project”.
- 2.9 Each should map to one of six Market Segments specified in SpC. 9.10 (Margins on licensee’s Connection activities) (with 3 categories excluded from the Market Segments).
- 2.10 Note that the categorisation is based on the type of connection and the associated work and does not necessarily align with how it is treated for charging purposes.

Table 2.1: Metered Connection Categories and Market Segments

	Metered Connection Category	Market Segments specified in SpC. 9.10
1	Metered DPCR4 Connection projects	Excluded
2	Single service LV connection	Excluded
3	Small project demand connection (LV)	Excluded
4	All other LV (with only LV work)	(i) LV work: low voltage Connection Activities involving only low voltage work, other than in respect of Excluded Market Segments.

**Guidance –** [RHO-ED2 Regulatory Instructions and Guidance: Annex G – Connections v2.0](#)  
[RHO-ED2 Regulatory Instructions and Guidance: Annex G – Connections v2.1](#)

<b>Metered Connection Category</b>		<b>Market Segments specified in SpC. 9.10</b>
5	LV end connections involving HV work	(ii) HV work: low voltage or high voltage Connection Activities involving high voltage work (including where that work is required in respect of Connection Activities within an Excluded Market Segment).
6	HV end connections involving only HV work	(ii) HV work: low voltage or high voltage Connection Activities involving high voltage work (including where that work is required in respect of Connection Activities within an Excluded Market Segment).
7	LV end connections involving EHV work	(iii) HV and EHV work: low voltage or high voltage Connection Activities involving extra high voltage work.
8	HV end connections involving EHV work	(iii) HV and EHV work: low voltage or high voltage Connection Activities involving extra high voltage work.
9	EHV end connections involving only EHV work	(iv) EHV work and above: extra high voltage and 132kV Connection Activities.
10	HV or EHV connections involving 132kV work	(iv) EHV work and above: extra high voltage and 132kV Connection Activities.
11	132kV end connections involving only 132kV work	(iv) EHV work and above: extra high voltage and 132kV Connection Activities.
12	DG connection at LV involving LV assets only	(v) LV work: low voltage Connection Activities involving only low voltage work.
13	DG connection at any voltage where HV is the highest voltage worked on	(vi) HV and EHV work: any Connection Activities involving work at high voltage or above.
14	DG connection at any voltage where EHV is the highest voltage worked on	(vi) HV and EHV work: any Connection Activities involving work at high voltage or above.
15	DG connection at any voltage where 132kV is the highest voltage worked on	(vi) HV and EHV work: any Connection Activities involving work at high voltage or above.

**2.11** Where a project involves connecting to more than one voltage level (more than one MPAN), it should be recorded under the Metered Connection Category of the highest voltage end point. For example, if an HV and an LV connection are made as part of a project, this should be recorded under HV Category 6: HV end connection involving HV work.

**Guidance** – ~~RIIO-ED2 Regulatory Instructions and Guidance: Annex G – Connections~~  
~~Connections v2.0~~ [RIIO-ED2 Regulatory Instructions and Guidance: Annex G – Connections v2.1](#)

---

- 2.12 Where any connection offer expenses associated with the quote are charged, then the income received should be treated as Customer Contributions whether or not the quotation is ultimately accepted.

## CC1 – Summary

- 2.13 The purpose of this worksheet is to provide a snapshot of all connections activity that took place in the Regulatory Year under report and also to provide a reconciliation to tables C2 & C20 in the Costs, Volumes and Revenue Reporting Pack.
- 2.14 This worksheet summarises in-year connections activity. It is a high level summary of worksheets CC2 and CC3. It shows direct and indirect costs and income for all sole use related connections (also split into metered, DG and unmetered connections) and Connections Reinforcement.
- 2.15 The costs reported are differentiated into cost types. The following lists the Cost Types used in the Costs, Volumes and Revenue Reporting Pack, which are defined in Annex A – Glossary:
- Total Direct Costs
  - Total Indirect Costs
  - Customer Contributions
  - Cost recoveries
- 2.16 For the avoidance of doubt all Margins charged on Connection Projects should be included in the amount input as Customer Contributions.
- 2.17 For Connections within price control the Cost Type split should be reported for:
- DPCR4 Connections
  - Customer funded connections (DPCR5, RIIO-ED1 and RIIO-ED2)
  - DUoS funded connections (DPCR5, RIIO-ED1 and RIIO-ED2).

**Guidance** – [RHO-ED2 Regulatory Instructions and Guidance: Annex G – Connections Connections v2.0](#)  
[RHO-ED2 Regulatory Instructions and Guidance: Annex G – Connections v2.1](#)

---

- 2.18 For Connections outside the price control, the Cost Type split should be reported for the following, which are defined in Annex A – Glossary:
- Sole Use Expenditure on Metered Connections
  - Sole Use Expenditure on DG Connections
  - Sole Use Expenditure on Unmetered Connections
- 2.19 The indirect costs will not map to the specific direct costs of a particular Connection Project. Indirect costs are calculated as a total and allocated across the Connection categories in the Regulatory Year. The same applies to indirect income.
- 2.20 The following cells should be input by the DNOs: J12, H13, I13, J13, N13, O13 and P13. For the rest of cells between Rows 9 to 16 no input is required by DNOs, the cells link to CC2 and CC3.

## **Reconciliation to the Costs, Volumes and Revenue Pack**

- 2.21 Rows 20 and 24 contain input cells. The values entered here should match the reported costs within the Costs, Volumes and Revenue pack.
- 2.22 The total cost for Connections inside the price control should match those reported in CC2. DNOs must ensure the total gross direct costs and income match those in ‘C2 – Connections Inside Price Control’ in the Costs, Volumes and Revenue Pack or any variances over £0.00m are explained in the commentary (there is no cross pack linking).
- 2.23 The total cost for Connections outside the price control should match Connections outside the price control reported in CC2 and CC3. DNOs must ensure the total gross costs and income matches the total in ‘C20 – Connections Outside Price Control’ in the Costs, Volumes and Revenue Pack or any variances over £0.00m are explained in the commentary (there is no cross pack linking).

## CC2 – Metered in-year

- 2.24 This worksheet provides a detailed overview of all metered Connection Projects that took place in the Regulatory Year. From this worksheet, indicative Margins across Metered Connection Categories are calculated.
- 2.25 Where work has been done within the year on a project that has not been completed, the proportion of expenditure and income recorded for the reporting year should be the same as the proportion of work done on the project in that year. For example, if 50% of the costs of a project were spent in a Regulatory Year then 50% of the income related to that project should be reported for the same Regulatory Year.
- 2.26 The costs and volumes data within this worksheet in any single reporting year may not align, as work that has been done in-year on projects that are not yet completed will be reflected in the expenditure columns but will not have an associated MPAN in the volume columns.
- 2.27 Direct costs are to be reported separately for Connection Projects where the end connection was provided by the DNO and where the end connection was provided by a third party.
- 2.28 All costs required to be entered in the worksheet are to be costs excluding any relevant proportion of the Margin and entered in pounds million (£m).

## Connections – Sole Use Funded

- 2.29 This is defined as the element of a Connection that will only be used by the connecting party (at the time of completing the work) and is therefore fully funded by this party. All connection jobs/projects that involve the provision of new MPANs/points of connection must have a sole use element. Upgrading Connection Projects are the only projects that are able to have no element of connection that is sole use funded.

**Guidance** – ~~RIIO-ED2 Regulatory Instructions and Guidance: Annex G – Connections~~  
~~Connections v2.0~~ [RIIO-ED2 Regulatory Instructions and Guidance: Annex G – Connections v2.1](#)

---

- 2.30 Note, where a Connection Project involves any diversionary works, the costs for these works must be included.
- 2.31 Costs should be reported for Contestable and Non-Contestable connections work combined.

## **Connections Reinforcement**

- 2.32 Where a Connection Project requires the reinforcement of existing assets or involves the installation of new assets that will not be used solely by the connecting party, there are instances where the work is fully funded by the new connectee, fully funded by the DNO, or where the funding will be split between the new connectee and the wider customer base through Distribution Use of System (DUoS) funding. This funding is split using the apportionment rule as detailed in DNO connections charging methodologies. These reinforcement costs are allocated between the customer and DUoS and are not discrete cost activities.
- 2.33 The portion funded by the connecting customer is referred to as “Connections Reinforcement – Customer Funded”. Note that this funding refers only to the element funded by the customer under the apportionment rule, rather than the total connecting customer contribution.
- 2.34 The portion that is funded by the wider customer base through DUoS is referred to as “Connections Reinforcement – DUoS Funded”.

## **Direct Costs**

- 2.35 These are costs associated with Direct Activities, ie those which involve physical contact with system assets (see Annex A – Glossary for a full definition).

## **Indirect Costs**

- 2.36 These are costs associated with Indirect Activities, ie those which do not involve physical contact with system assets (see Annex A – Glossary for a full definition).



**Guidance** – [RIIO-ED2 Regulatory Instructions and Guidance: Annex G – Connections v2.0](#)  
[RIIO-ED2 Regulatory Instructions and Guidance: Annex G – Connections v2.1](#)

---

Indirect Costs are made up of the following cost types as defined Annex A – Glossary:

- Closely Associated Indirects
- Business Support Costs
- Non-Operational Capex.

## MPANs connected

2.37 These four columns must be completed for each type of connection with the number of MPANs connected at each voltage level (LV, HV, EHV and 132kV). These columns must include all MPANs connected to the DNO network through a Connection Project, ie values must include MPANs resulting from ICP connections. Where a Connection Project connects an independent network (categorised as “IDNO”) one point of connection must be logged, against the voltage at which the independent network is connected to the DNO network.

## Income – direct

2.38 Income received in the reporting year relating to payment for direct work.

## Income – indirect

2.39 Income received in the reporting year relating to payment for indirect costs.

## Indicative Margins

2.40 These calculations give an indicative view of returns made on connections activity. The indirect margin is only an indicative measure of what the actual rate of return made on the relevant indirect connection activities might be. All calculations are based upon the chargeable elements of the connection only.

## CC3 – Unmetered in-year

2.41 This worksheet provides a detailed overview of all unmetered Connection Projects that took place in the Regulatory Year. From this worksheet, levels of

**Guidance** – [RIIO-ED2 Regulatory Instructions and Guidance: Annex G – Connections](#)  
[Connections v2.0](#)  
[RIIO-ED2 Regulatory Instructions and Guidance: Annex G – Connections v2.1](#)

indicative Margins across types of unmetered Connection Projects are calculated.

- 2.42 The worksheet collects the in-year cost and volume data relating to all unmetered Connection Projects, split by Unmetered Connection Category listed in Table 2.2.

Table 2.2: Unmetered Connection Categories

<b>Code</b>	<b>Unmetered Connection Category</b>
UMLA	Unmetered Local Authority Connections (L.A.)
PFI	Unmetered Connections provided under Private Finance Initiative
OUMC	Other Unmetered Connections (non-L.A, or PFI)

- 2.43 For unmetered Connection Projects which started in DPCR4, DNOs should note which category – UMLA, PFI or OUMC - they fall into like any other unmetered Connection Project which started in DPCR5, RIIO-ED1 or RIIO-ED2. Only when the type of project is unknown and DNOs cannot allocate to one of the three categories, should it be reported under UMLA.
- 2.44 Definitions are the same as worksheet CC2 with the addition of volumes recorded in the columns for connections by DNO and connections by ICPs, to include end connections, transfers and disconnections. Though these volumes are only reported in aggregate, DNOs should retain the details behind the totals.

## Unmetered Work

- 2.45 The number of unmetered end connections provided within the Regulatory Year.
- 2.46 The number of occurrences of a service cable being transferred from one street lighting column/equivalent to another. Although the service cable is usually cut and replaced by a new cable to the new column, the work must be counted as one transfer rather than one disconnection and one reconnection.

**Guidance** – ~~RIIO-ED2 Regulatory Instructions and Guidance: Annex G – Connections~~  
~~Connections v2.0~~ [RIIO-ED2 Regulatory Instructions and Guidance: Annex G – Connections v2.1](#)

---

- 2.47 The number of disconnections of service cables. This quantity must not include any service cable disconnections provided as part of a service cable transfer. In most cases these disconnections will form part of a wider Connections Project in the Connections pack, but in some cases will include individual service disconnections. DNO's should state in their Commentary whether they have included the volumes associated with disconnections that do not form part of wider connections projects.

## CC4 – Completed summary

- 2.48 The purpose of this worksheet is to provide a snapshot of all Connection Projects that were financially closed within the Regulatory Year, and to see whether a DNO has over or under recovered its direct costs.
- 2.49 It is split by whether the end connection was provided by the DNO or a third party and shows the number of connections and projects, and actual and quoted direct costs. Projects should be summarised by DNO or Third Party based upon by who is the majority provider of the Contestable works within each individual Connection Project. The majority provider must be determined as the party that has undertaken the greater value of Contestable connection work, as prescribed by the details of the relevant DNO's charging methodology.
- 2.50 All connection projects meeting the definition of Connection Project in the glossary should be included in this worksheet. Each column is described, in turn, below.

## Connection Category

- 2.51 All Connection Projects must be categorised into one of the Connection Categories listed in Table 2.3 with the corresponding code entered in the relevant column. Note that the categorisation is based on the type of

**Guidance – [RIIO-ED2 Regulatory Instructions and Guidance: Annex G – Connections](#)  
[Connections v2.0](#)[RIIO-ED2 Regulatory Instructions and Guidance: Annex](#)  
[G – Connections v2.1](#)**

connection and the associated work and does not necessarily align with how it is treated for charging purposes.

Table 2.3: Connection Categories

<b>Code</b>	<b>Category</b>
LVSSA	Single service LV connection
LVSSB	Small project demand connection (LV)
LVAL	All other LV (with only LV work)
LVHV	LV end connections involving HV work
HVHV	HV end connections involving only HV work
LVEHV	LV end connections involving EHV work
HVEHV	HV end connections involving EHV work
EHVEHV	EHV end connections involving only EHV work
HV132	HV or EHV connections involving 132kV work
132kV	132kV end connections involving only 132kV work
DGLV	DG connection at LV involving LV assets only
DGHV	DG connection at any voltage where HV is the highest voltage worked on
DGEHV	DG connection at any voltage where EHV is the highest voltage worked on
DG132kV	DG connection at any voltage where 132kV is the highest voltage worked on
UMLA	Unmetered Local Authority connections
PFI	Unmetered connections provided under Private Finance Initiative
OUMC	Other unmetered connections (non-LA or PFI)

## Number of Connections

2.52 Record the number of connections provided for all the connections projects within each market segment that were financially completed in the reporting year.

## Number of Projects

2.53 Record the number of connections projects within each market segment that were financially completed in the reporting year.

## Previously closed job

2.54 If projects are reopened then the new total cost must be reported, not just the change from the previous cost.

**Guidance** – [RHO-ED2 Regulatory Instructions and Guidance: Annex G – Connections v2.0](#)  
[RHO-ED2 Regulatory Instructions and Guidance: Annex G – Connections v2.1](#)

---

## **Final Contracted Value Direct Cost excluding Margin (£m)**

2.55 The Final Contracted Value must relate to the full and final amount paid by that customer for the completion of a Connection Project, including additional charges or any refunds provided. The costs reported in the “Final Contracted Value” columns should all include both Contestable and Non-Contestable direct costs but exclude Margins.

## **Actual Direct Costs**

2.56 This refers to the actual direct costs incurred by the DNO for completing all physical work that forms part of the completed Connection Project

## **Final Contracted Direct Costs excluding Margin – Connections – Sole Use Funded – (£m)**

2.57 This column must be completed with the direct cost quoted by the DNO for completing all direct Contestable and Non-Contestable work that forms part of the sole use element of each Connection Project. The value entered in this column must only relate to the cost of the works, without any margin applied.

2.58 Where a Connection Project involves any diversionary works, the costs for these works must be included.

## **Actual Direct Costs – Connections – Sole Use Funded (£m)**

2.59 This column must be completed with the actual direct cost incurred by the DNO for completing all Contestable and Non-Contestable work that forms part of the sole use element of each Connection Project.

## **Over/under recovery on Sole Use Funded Connections – direct costs**

2.60 These are calculation cells which will show by how much the DNO has over- or under-recovered its costs on the direct costs of the Contestable element of the connection that is sole use funded. This is presented as the difference between

**Guidance** – [RIIO-ED2 Regulatory Instructions and Guidance: Annex G – Connections v2.0](#)  
[RIIO-ED2 Regulatory Instructions and Guidance: Annex G – Connections v2.1](#)

---

the final contracted value of the element of connection that is sole use funded and the actual value as a percentage.

### **Final Contracted Direct Costs – Connections Reinforcement – Customer Funded (£m)**

2.61 This column must be completed with the direct cost quoted by the DNO for completing all direct Contestable and Non-Contestable work that forms part of the customer funded element of works. The value entered in this column must only relate to the cost of the works, without any margin applied.

### **Actual Direct Costs – Connections Reinforcement – Customer Funded – (£m)**

2.62 This column must be completed with the actual direct cost incurred by the DNO for completing all Contestable and Non-Contestable work that forms part of the customer funded element of.

### **Over/under recovery on element of connection that is customer funded direct costs – (%)**

2.63 This is a calculation cell which will show by how much the DNO has over or under recovered its costs for the customer-funded element of the connection as a %.

### **Final Contracted Direct Costs – Connections Reinforcement – DUoS Funded – (£m)**

2.64 This column must be completed with the direct cost quoted by the DNO for completing all direct Contestable and Non-Contestable work that forms part of the DUoS funded element of works. The value entered in this column must only relate to the cost of the works, without any margin applied.

**Guidance** – [R110-ED2 Regulatory Instructions and Guidance: Annex G – Connections Connections v2.0](#)  
[R110-ED2 Regulatory Instructions and Guidance: Annex G – Connections v2.1](#)

---

## **Actual Direct Costs – Connections Reinforcement – DUoS Funded – (£m)**

2.65 This column must be completed with the actual direct cost incurred by the DNO for completing all Contestable and Non-Contestable work that forms part of the DUoS funded element of works.

## **Over/under recovery on element of connection – DUoS funded direct costs – (%)**

2.66 This is a calculation cell which will show by how much the DNO has over- or under-recovered its direct costs for the DUoS funded element of the connection that is subject to the apportionment rule as a %.

## **Total Direct Costs**

2.67 This is the total direct costs split between Final Contracted Direct Costs and Final Actual costs for Sole Use, Customer and DUoS funded costs subject to the apportionment rules.

## **Final Contracted direct costs excluding Margin – (£m)**

2.68 This is a calculation cell which will show the total direct costs contracted.

## **Final Contracted actual costs excluding Margin – (£m)**

2.69 This is a calculation cell which will show the total actual direct costs.

## **Total direct costs - over/under recovery – (%)**

2.70 This is a calculation cell which will show the over/under recovery of total direct costs as a %.

## **Applied Margin**

2.71 This column must be completed with the value of margin that was applied to the direct costs quoted by the DNO for completing all the direct Contestable and

**Guidance** – [RIIO-ED2 Regulatory Instructions and Guidance: Annex G – Connections v2.0](#)  
[RIIO-ED2 Regulatory Instructions and Guidance: Annex G – Connections v2.1](#)

---

Non-Contestable work that forms part of the sole use element of each Connections project.

## Other Charges

- 2.72 The following must be included in aggregate in the column headed 'Other Charges'.
- 2.73 Where a connection quotation includes a value assigned to cover a customer-to-customer rebate where the connection involves the utilisation of capacity of assets installed as part of a new Connection Project completed within the time limit set out in The Electricity (Connection Charges) Regulations (ECCRs), the value entered must equate to a relevant proportion of the customer funded cost of the installation of the original asset under the apportionment rule.
- 2.74 Where a connection quotation includes a value assigned to cover a rebate to the DNO where the connection involves the utilisation of capacity of assets installed as part of a new Connection Project completed within the time limit set out in The Electricity (Connection Charges) Regulations (ECCRs), the value entered must equate to a relevant proportion of the DUoS funded cost of the installation of the original asset under the apportionment rule.
- 2.75 Any quoted costs associated with connecting party funded ongoing operation and maintenance costs, ie the capitalised O&M charged.

## Total Charge to Customer

- 2.76 This is the total charge to the customer including both direct and indirect charges. This includes any sole use costs, reinforcement charges and any Other Charges including any margin (such as ECCR or O&M).

## CC5 – Annual quotations issued

- 2.77 This worksheet provides a summary of all quotes that are provided by a DNO within the reporting year Including any Margin (Connection Projects only). The



**Guidance – ~~RIIO-ED2 Regulatory Instructions and Guidance: Annex G – Connections~~  
~~Connections v2.0~~RIIO-ED2 Regulatory Instructions and Guidance: Annex  
 G – Connections v2.1**

---

purpose of this is to allow Ofgem to see all work that was quoted for, whether that work was actually carried out or not. This table splits connection offers by the intended provider of the Contestable works either the DNO or a Third Party.

2.78 The table requires connection offers to be summarised by number of quotes and the final quoted value for each of the Metered Connection Categories detailed in CC4. The status of each project should be considered at the 31 March for the relevant year for allocation into the relevant category. The offers will be split into four categories:

- Projects Full Acceptance – This includes all SLC 15 and section 16 of The Electricity Act 1989 connections offers where the customer has accepted the DNO costs.
- Projects Partial Acceptance – This includes Dual Offers where the customer has accepted the Non-Contestable element only. The DNO full cost offer costs should be reported in this table.
- Not Accepted Projects – This reports all connections offers not accepted in the reporting year.
- Still Valid Projects – This reports connections offers still valid at the end of the reporting year.
- Diversion costs are included should be entered in the quote costs.

2.79 Total Quotes – The cells in this category are a summation of the categories described above. In addition an acceptance rate is calculated based upon the number of Full and Partially Accepted quotes as a % of Total Quotes within each market segment.

2.80 The data reported within each of the above categories is in the same format as detailed below.

## Number of Offers

2.81 This is the total number of connection offers provided in the reporting year ending 31 March by sub-category. Dual Offers should be counted as one

**Guidance** – [RHO-ED2 Regulatory Instructions and Guidance: Annex G – Connections v2.0](#)  
[RHO-ED2 Regulatory Instructions and Guidance: Annex G – Connections v2.1](#)

---

connection offer and the Section 16 element of the connection offer should be reported.

## **Connections Reinforcement – Sole Use Funded – Contestable – Total Cost £m**

2.82 The value entered here is the total charge to the customer for Sole Use activities and includes direct and indirect charges and any margin applied.

## **Connections Reinforcement – Sole Use Funded – Non-Contestable – Total Cost £**

2.83 The value entered here is the total charge to the customer for Sole Use activities and includes direct and indirect charges. No margin should be applied to Non-Contestable works.

## **Connections Reinforcement – Customer funded - Total Cost £m**

2.84 The value entered here is the total charge to the customer for the element of the connection offer that is subject to the apportionment rule - customer funded and should include all Contestable and Non-Contestable costs. The value entered includes direct and indirect charges. No margin should be applied to Non-Contestable works.

## **Connections Reinforcement – DUoS funded - Total Cost £m**

2.85 The value entered here is the total costs attributed for the element of the connection offer that is subject to the apportionment rule – DUoS funded and should include all Contestable and Non-Contestable costs. The value entered includes direct and indirect charges. No margin should be applied to Non-Contestable works.

**Guidance** – [RIIO-ED2 Regulatory Instructions and Guidance: Annex G – Connections v2.0](#)  
[RIIO-ED2 Regulatory Instructions and Guidance: Annex G – Connections v2.1](#)

---

## Other Charges £m

2.86 The value entered here is the total additional costs added to the connection offer that are described in CC4.

## CC6 – Annual out of area connections

2.87 Rows 7 to 21 are for reporting the volume of Connection Projects carried out by the DNO out of area. These volumes are to be entered against the host DNO of the Distribution Service Area (DSA) in which they took place. Where a DNO carries out a connection on an existing IDNO, this should be captured within the “Other (ie, IDNO)” row of the worksheet.

2.88 Row 24 is for reporting the charges made for out of area connections. Charges entered must be consistent with the amounts shown as connections contributions in the DNO's regulatory accounts (where applicable).

2.89 Each DNO must state the charges it levied for connections it made outside of its distribution services area, both metered and unmetered (reported under the relevant column) that were financially completed within the reporting year.

2.90 For metered connections, the voltage segment within which an embedded network connection falls will depend on the work undertaken by the DNO to connect that network. The segmentation is based on the voltage at the point of connection, not at the point at which it is metered.

## CC7 – Direct Related Party Margin (RPM)

2.91 This worksheet is for DNOs to report the level of Related Party margin relevant to connection activity disaggregated by connection category, level of margin and the element of the connection that is sole use funded (customer and DUoS funded).

2.92 For the avoidance of doubt, this worksheet must be completed with the Related Party margin relating to total in-year costs, as opposed to completed jobs.

**Guidance** – ~~RIIO-ED2 Regulatory Instructions and Guidance: Annex G – Connections~~  
~~Connections v2.0~~ [RIIO-ED2 Regulatory Instructions and Guidance: Annex G – Connections v2.1](#)

---

## CC8 – Time to Connect and Time to Quote

- 2.93 The time to connect incentive is intended to encourage DNOs to reduce the overall time to connect smaller Low Voltage (LV) metered connections to the electricity distribution network. The exact scope of the incentive is specified in paragraph 2.95.
- 2.94 This incentive measures the time taken from receipt of initial connection application to issuing a Quotation (Time to Quote), and the time taken from Quotation acceptance to connection completion (Time to Connect).<sup>1</sup>
- 2.95 The incentive is based on the average Time to Quote and average Time to Connect measured in Working Days for two categories of connections. These are small single Premises that can be connected to existing network (LVSSA) and fewer than five Premises (LVSSB). The relevant targets have been set for the five Regulatory Years between 2023-24 to 2027-28. Please see Special Condition 4.2 for more information on targets and deadbands. This incentive applies to LVSSA and LVSSB metered connections.
- 2.96 For the Time to Quote element, the incentive applies to all applications received where the Application Received Date is on or after 1 April 2015.
- 2.97 For the Time to Connect element, the incentive applies to all quotes where the Final Connection Date is on or after 1 April 2023.
- 2.98 This Revenue Reporting Table does not require any input from DNOs. The information in this table should be used to complete the relevant cells in the R5a – Links worksheet in the Revenue Reporting Pack.

---

<sup>1</sup> For more information on the background to this incentive please read our [RIIO-ED2 Sector Specific Methodology Decision](#)

**Guidance** – [RIIO-ED2 Regulatory Instructions and Guidance: Annex G – Connections v2.0](#)  
[RIIO-ED2 Regulatory Instructions and Guidance: Annex G – Connections v2.1](#)

---

## Projects that are included in the incentive

- 2.99 Applications relating to Distributed Generation Connections are included where the generation associated with the application is a single installation that would be covered by the Single Premises Connection Procedure Process in the Energy Networks Association's Engineering Recommendation G98. This covers the connection of small scale embedded generators (up to 16A per phase) in parallel with an Electricity Distributor's network where the application would be treated as a demand application and subject to this incentive but only where a new connection is required.
- 2.100 The incentive includes connection offers relating to additional loads, within the definitions of LVSSA and LVSSB, where physical works are required to be carried out to upgrade the existing connection or electricity infrastructure supplying the property. This may include nil cost connection offers.
- 2.101 Where the connection relates to a temporary supply (ie one that is required for a period of less than five years) these are included in the incentive.

## Projects that are not included in the incentive

- 2.102 All unmetered connections are excluded from the incentive.
- 2.103 Alterations to a service position that do not require an increase in capacity are excluded from the incentive.
- 2.104 Load check notifications received for existing connections that are less than 60kVA where the load is acceptable, no physical works are required to be undertaken and no formal connection offer is issued are excluded from the incentive.
- 2.105 Requests for additional load are not included in the incentive where the work involved relates to:
- fuse changes to existing connections with no formal connection offer being issued

**Guidance** – ~~RIIO-ED2 Regulatory Instructions and Guidance: Annex G – Connections~~  
~~Connections v2.0~~ RIIO-ED2 Regulatory Instructions and Guidance: Annex  
G – Connections v2.1

---

- service upgrades (changing services, cut-outs or unlooping) for existing distribution connections with no formal connection offer being issued
- quotations issued for works not relating to the DNO's asset (eg installation of meter tails for the provision of a new meter).

2.106 The incentive only applies where the DNO is carrying out all of the work. Quotes that involve Contestable work that will be carried out by an independent third party connection provider are not included in the incentive.

2.107 The incentive does not apply if the generation associated with the application is a planned installation of multiple installations that would be covered by the Multiple Premises Connection Procedure in the Energy Networks Associations Engineering Recommendation G98. This covers the connection of small scale embedded generators (up to 16A per phase) in parallel with an Electricity Distributor's network then the application would be treated as a generation application and not subject to this incentive.

2.108 The incentive does not apply if the generation associated with the application would be covered by the Energy Networks Association's Engineering Recommendation G99. This covers the connection of embedded generating plant to the Electricity Distributor's network then the application would be treated as a generation application and not subject to this incentive.

## **Average Time to Quote**

2.109 The Average Time to Quote will be based on all LVSSA and LVSSB quotes issued in the Regulatory Year.

2.110 The Time to Quote will be measured as the difference (in Working Days) between the Application Received Date and the Quotation Issued Date.

2.111 The Time to Quote will be measured for each relevant quote issued in the Regulatory Year and the average number of Working Days calculated by summing the total length of time in Working Days taken to quote and dividing it by the number of quotes issued in the Regulatory Year.

**Guidance** – ~~RIIO-ED2 Regulatory Instructions and Guidance: Annex G – Connections~~  
~~Connections v2.0~~ RIIO-ED2 Regulatory Instructions and Guidance: Annex  
G – Connections v2.1

---

## Application Received Date

- 2.112 The start date for Time to Quote will be set by the Application Received Date.
- 2.113 Ideally Customers will provide the DNO with all the Information necessary for the DNO to provide a Quotation. However, for measuring the time for this incentive, incomplete applications may trigger the start of the time period. Minimum Information defined under the Guaranteed Standards of Performance (GSoP) is not required to meet the definition of Information.
- 2.114 The principle is that where the Customer provides the basic Information that should allow a DNO to make a connections offer for these relatively simple requests then that is when the Application Received date starts. It is difficult to be completely prescriptive on the circumstances whereby this basic Information is provided and therefore DNOs must exercise reasonable judgement. The incentive is aimed at improving the approaches DNOs have in engaging with Customers to get the Information they require and not be seen to have a number of ‘hurdles’ that Customers must jump through. This includes receipt of an application form even if it is not complete. It would also include a letter, electronic correspondence, telephone applications or similar. Any method by which a DNO allows a Customer to apply for a connection should be included within the scope of the incentive. Further information on what constitutes basic information is outlined in the paragraphs below.
- 2.115 Where a Customer contacts the DNO to request an application form or to enquire how to apply this is not covered by the incentive as this is not an application.
- 2.116 Adequate contact details should be limited to the Customer (or company) name and one valid form of communication. This could be a postal address or an email address. Whilst a valid telephone number would be enough to allow the DNO to commence the process, for the Application Received Date, a valid email or postal address would be required to allow the DNO to issue the Quote.

**Guidance** – ~~RIIO-ED2 Regulatory Instructions and Guidance: Annex G – Connections~~  
~~Connections v2.0~~ RIIO-ED2 Regulatory Instructions and Guidance: Annex  
G – Connections v2.1

---

- 2.117 Sufficient detail of the location of the new connection must be provided by the Customer. However, in most circumstance, DNOs must not insist on being provided with a location plan. In many circumstances a description (eg “next door to”, “opposite”) will give an adequate description of the location. In exceptional circumstances, eg remote areas, a location plan may be the only practical way for the DNO to identify the specific location for the connection.
- 2.118 Generally for LVSSA and LVSSB type applications DNOs will not explicitly require the Customer to provide their load requirements but will derive them from descriptions provided by the Customer, eg a description of the property and general electricity usage.
- 2.119 If a DNO requires any further Information there is no change to the start date for measuring the Average Time to Quote.

### Re-quotes and changes to requirements

- 2.120 If no quote is actually sent, eg if the quote was cancelled by the Customer then the project would not be included as part of the incentive.
- 2.121 Where a Customer asks for a re-quote then each quote would be measured separately. For subsequent quotes for the same project, the start point should be when the Customer changed requirements or requested a re-quote or the quote validity period had lapsed and a re-quote was issued.
- 2.122 Where the Customer makes a material change to their initial application, which prompts redesign of the DNO’s proposal, then this will be treated as a new application and the clock will be reset to zero. Where the Customer has made a minor modification, the DNO will wherever practical continue to provide the quotation within the prescribed period with the clock remaining on the original timescale.
- 2.123 If the Customer changes requirements such that the quote is no longer an LVSSA or LVSSB category then it should not be included within the incentive.



**Guidance** – [RIIO-ED2 Regulatory Instructions and Guidance: Annex G – Connections Connections v2.0](#)  
[RIIO-ED2 Regulatory Instructions and Guidance: Annex G – Connections v2.1](#)

- 2.124 For quotes where the acceptance period is extended without another quote being issued then the original Quotation Issued Date should be used. The project should only be counted once in the measurement of the average time.
- 2.125 For quotes that are re-issued when an acceptance period has lapsed then the request from the Customer for the quote to be reissued would be used for the start point, assuming no change in the Customer's requirements. The original quote would have been counted separately with the appropriate Time to Quote.

### Working Day and reporting performance against timescales

- 2.126 Any request received by the DNO on or before 17.00 hours on a Working Day (which excludes weekends and relevant bank holidays), should be recorded as being received on that date. Any request received after 17.00 hours on a Working Day should be recorded as being received on the next Working Day. This will be known as the "Application Received Date". Examples are shown in Table 2.7 below.
- 2.127 The Quotation Issued Date should be recorded as being the Working Day that the quote is issued, either electronically or in hard copy. If it has been issued before 23.59 on a Working Day then it will have been deemed to have been sent on that Working Day.
- 2.128 The difference between the Quotation Issued Date and the Application Received Date can never be less than zero Working Days.
- 2.129 The Quotation Issued Date may be different to the date that the applicant receives the Information, to allow for postage or any other delays.

Table 2.7: Example for treatment of Working Day timescales

Action	Time	Date	Clock	Timescale for reporting
Application for Quotation received	16:59	Monday	Starts	Monday as day zero
Application for Quotation received	17:00	Monday	Starts	Monday as day zero

**Guidance** – [RIIO-ED2 Regulatory Instructions and Guidance: Annex G – Connections v2.0](#)  
[RIIO-ED2 Regulatory Instructions and Guidance: Annex G – Connections v2.1](#)

---

Action	Time	Date	Clock	Timescale for reporting
Application for Quotation received	14:00	Saturday	Starts	Monday as day zero

---

## Average Time to Connect

- 2.130 The Average Time to Connect will be based on all LVSSA and LVSSB connections made in the Regulatory Year. The regulatory period when the project was accepted has no bearing on the reporting period.
- 2.131 The Time to Connect will be measured as the difference between the Acceptance Date and the Final Connection Date.
- 2.132 The Time to Connect will be measured for each connection project made during each Regulatory Year and the average time calculated by summing the total length of time taken to make the Final Connection Date and dividing it by the number of Final Connection Dates made during the Regulatory Year. In circumstances where Customers send payment but wish to discuss specific terms in the DNO's Quotation, then acceptance would only be complete when these discussions had been completed, new terms agreed and a revised offer had been accepted. At that point the clock would start.
- 2.133 Where the DNO's Quotation requires payment on acceptance then the payment must be received in order for the acceptance to be completed. The Acceptance Date will be the later of the date the written acceptance is received or the date the payment is received. For example if the customer does not include a cheque with the signed acceptance, then it will be when the cheque is received that the Quotation will have been accepted.
- 2.134 If the DNO's Quotation does not require payment on acceptance, eg the DNO invoices once the written acceptance is received, or payment is not required until a later date, then it is the date of the written acceptance that will determine the Acceptance Date.

**Guidance** – [R110-ED2 Regulatory Instructions and Guidance: Annex G – Connections v2.0](#)  
[R110-ED2 Regulatory Instructions and Guidance: Annex G – Connections v2.1](#)

---

2.135 The calculation of the average does not make any adjustment for factors external to the DNO's control. For example, if the Customer is not ready then that would still be included in the times calculated.

2.136 Note that at the time of the Final Connection Date the Customer may still not be energised, eg the meter is still required, but all of the DNO's works will have been completed to allow Energisation.

### Working Day and reporting performance against timescales

2.137 Any acceptance (including payment) received by the DNO on or before 17.00 hours on a Working Day (which excludes weekends and relevant bank holidays), should be recorded as being received on that date. Any acceptance received after 17.00 hours on a Working Day should be recorded as being received on the next Working Day. This will be known as the "Acceptance Received Date".

2.138 The Final Connection Date should be recorded as being the date the connection is made.

2.139 Where the licensee is subject to an event of the type listed in 2.141, it will be provided relief from the Time to Connect and Time to Quote incentive for the total number of working days that it has been impacted. This relief will be based on a separate calculation for Time to Connect and Time to Quote.

2.140 The relief is composed of the following elements:

- Inflight jobs – calculated by multiplying the number of inflight jobs times at the time of the notification of the event by the number of days from the notification of the event until 24 hours after the last customer was restored under the event.
- New/progressed jobs during the event – calculated by multiplying the average number of new jobs per day (separately for time to quote and time to connect) by the cumulative number of elapsed days (that is for a 3 day event,  $3+2+1 = 6$ ) from the notification of the event until 24 hours after the last customer was restored under the event.

**Guidance** – ~~RIIO-ED2 Regulatory Instructions and Guidance: Annex G – Connections~~  
~~Connections v2.0~~ ~~RIIO-ED2 Regulatory Instructions and Guidance: Annex~~  
~~G – Connections v2.1~~

---

2.141 The events referred to in 2.139 are:

- an outage which was part of an Electricity System Restoration event (as covered by the DESNZ National Emergency Plan: Downstream Gas and Electricity); or
- an outage which was part of a rota disconnection event (as defined in the guaranteed standards of performance, or as covered by the DESNZ National Emergency Plan: Downstream Gas and Electricity); or
- an outage which was part of a Low Frequency Demand Disconnection event (as defined in the Grid Code, or as covered by the DESNZ National Emergency Plan: Downstream Gas and Electricity); or
- in respect of any other outage which is specified as an event within the Grid Code, or as covered by the DESNZ National Emergency Plan: Downstream Gas and Electricity.

## CC9 – Major Connections Customer Satisfaction Survey

2.1382.142 This worksheet is for DNOs to record data related to the Major Connections Customer Satisfaction Survey (MCCSS). The MCCSS measures customers' satisfaction in relation to the pre-application, quotations and final connection elements of major connections service provision delivered by DNOs.

2.1392.143 The Major Connections Governance Document sets out the instructions and guidance for submitting data for the MCCSS.<sup>2</sup> Specifically this includes:

- the form of the customer satisfaction survey questionnaire and the manner in which such surveys are to be conducted
- procedures to mitigate the risk of bias
- the provision of survey population data to the appointed independent third party and exclusions
- sample selection and timing of the surveys

---

<sup>2</sup> See here for the Major Connections Governance Document

**Guidance** – [RIIO-ED2 Regulatory Instructions and Guidance: Annex G – Connections v2.0](#)  
[RIIO-ED2 Regulatory Instructions and Guidance: Annex G – Connections v2.1](#)

---

- the method for calculating the results of the survey<sup>3</sup>
- the arrangements for reporting the survey results.

DNOs should submit data in accordance with the Major Connections Governance Document.

## CC10 – Low carbon technology (LCT) connections

2.144 The purpose of this worksheet is to record data related to the retrofit connection of low carbon technologies (LCTs) to the distribution network, including heat pumps, electric vehicle charge points (EVCPs), solar photovoltaic panels (PV) and batteries. The worksheet also covers associated works, such as service alterations or upgrades to the customer’s connection to facilitate these connections. The provision of this data will allow Ofgem to understand the readiness of the electricity networks to support the rollout of LCTs, which is essential to Ofgem’s net zero duty.

2.145 The worksheet includes sections for each LCT, with some varying or additional metrics between each LCT. For the rest of this guidance, we will refer to LCTs when we are providing guidance that is relevant to all LCTs in the worksheet, and will specify technologies when guidance only refers to one of the LCT types in the worksheet.

2.146 Where CC10 asks for data on the number of applications that have been received during the reporting year, this means report the total number received, including where applications have subsequently not progressed (i.e. where applicants have dropped the application, or any other reason for not progressing). This applies to all requests in CC10. For example, the number of LCT connection applications received during the reporting year, which require a fuse upgrade before the connection can be approved, includes applications

---

<sup>3</sup> The assessment of whether the data meets the statistical confidence threshold is the responsibility of the independent third party and should be reported to Ofgem by the DNOs accordingly.

**Guidance – ~~RIIO-ED2 Regulatory Instructions and Guidance: Annex G – Connections Connections v2.0~~RIIO-ED2 Regulatory Instructions and Guidance: Annex G – Connections v2.1**

---

which the DNO identified as requiring the upgrade, even if the applicant subsequently dropped the application before the upgrade work was carried out.

**2.147 LCT connection applications also include:**

- notification of an LCT connection made to the DNO after the LCT was connected through the “Connect & Notify” route;
- applications made ahead of connection;
- applications and notifications made through paper forms, email, online applications and platforms hosted by individual DNOs; and
- the Connect Direct platform hosted by the ENA.

**2.148** Where LCT installation applications form one part of a connection application covering multiple technologies, i.e. an application to connect a heat pump alongside a battery, EV charge point, or PV panel, this application should be counted towards the total number of applications for each individual technology named in the single application. This also applies to any other relevant metric, such as the number of applications that require a 3-phase upgrade and time taken to deliver a 3-phase upgrades, which should be reported individually in each relevant LCT section of the worksheet.

**2.149** LCT connection applications that have been automatically approved refers to applications that have been approved for connection without any manual assessment of the application. This includes applications that have been algorithmically processed and approved by the Connect Direct platform, a DNO’s own platform or algorithmic assessment, or a combination of both.

**2.150** Where an application has been automatically approved by Connect Direct, but is then escalated for manual assessment by the relevant DNO and manually processed by that DNO, this should not be recorded as an automatic approval. Where an application has been sent by Connect Direct for manual assessment by the relevant DNO, but is then automatically approved by the DNO’s system or

**Guidance – ~~RIIO-ED2 Regulatory Instructions and Guidance: Annex G – Connections~~  
~~Connections v2.0~~RIIO-ED2 Regulatory Instructions and Guidance: Annex  
 G – Connections v2.1**

---

platform without any manual assessment, this should be recorded as an automatic approval.

2.151 Where multiple connection upgrades are required to support an LCT installation, only the most substantial element of the upgrade should be recorded. This assumes that more minor upgrades are always addressed alongside more substantial upgrades. i.e. :

- Cut-out upgrades that include fuse upgrades are only recorded as cut-out upgrades
- Service line upgrades that include new cut-outs and fuses are only recorded as service line upgrades
- 3-phase upgrades that include new cut-outs and fuses are only recorded as 3-phase upgrades
- Unlooping that includes 3-phase, fuse or cut-out upgrades are only recorded as unlooping
- Service line upgrades only refer to single-phase upgrades for unlooped properties. 3-phase upgrades and unlooping should not be recorded against service line upgrades

2.152 Time should be measured as the number of working days between receiving the initial connection application and completion of the relevant activity (connection application approval, fuse, cut-out, and service cable upgrades, unlooping, or installation of a 3-phase supply).

2.153 Average time should be calculated by summing the total time to complete an activity across all applications that require that activity and dividing it by the total number of applications that require the activity.

2.154 Any request received by the DNO on or before 17.00 hours on a working day (which excludes weekends and relevant bank holidays), should be recorded as being received on that date. Any request received after 17.00 hours on a working day should be recorded as being received on the next working day.

2.155 Where the Customer provides the basic Information that should allow a DNO to make an assessment of the connection application, then that is when the

**Guidance – ~~RIIO-ED2 Regulatory Instructions and Guidance: Annex G – Connections~~  
~~Connections v2.0~~RIIO-ED2 Regulatory Instructions and Guidance: Annex  
G – Connections v2.1**

---

application assessment time should be recorded from. It is difficult to be completely prescriptive on the circumstances whereby this basic Information is provided and therefore DNOs must exercise reasonable judgement.

2.156 Where “solar PV”, “battery” or “batteries”, and “EV chargepoints” or “EVCPs” are mentioned, this should include completed connection applications made for domestic properties only and should not duplicate other regulatory reporting requirements.

2.157 Average cost of 3-phase upgrade refers to the average cost payable by the customer, and does not include the cost of any related upgrades to the surrounding network that are socialised through bills.



**Guidance** – [RHO-ED2 Regulatory Instructions and Guidance: Annex G – Connections v2.0](#)  
[RHO-ED2 Regulatory Instructions and Guidance: Annex G – Connections v2.1](#)

---

### 3. Guidance for completing the SLC 15 and SLC 15A reporting packs

#### Introduction

- 3.1 The purpose of collecting information related to SLC 15 and SLC 15A is to monitor compliance with the standards of performance specified in the licence.
- 3.2 This chapter provides instructions and guidance to licensees on how to report information required under Standard Licence Condition 15 (SLC 15) and Standard Licence Condition 15A (SLC 15A).

#### **SLC 15 (Standards for the provision of Non-Contestable Connection Services)**

- 3.3 SLC 15 governs the standards associated with providing Non-Contestable services.

#### **SLC 15A (Connection Policy and Connection Performance)**

- 3.4 SLC 15A governs compliance with:
- The Electricity (Connection Standards of Performance) Regulations 2015 as amended (“The Regulations”) – In 2015 Ofgem issued The Electricity (Connection Standards of Performance) Regulations 2015 (ie “the Regulations”). The Regulations specify the Electricity Connection Guaranteed Standards (ECGS) for metered and unmetered demand connection customers.
  - Distributed Generation (DG) Standards Direction (“the DG Standards Direction”) – SLC 15A allows us to issue a Direction containing standards that apply to the distributed generation connection customers – the DG Standards Direction. Ofgem issued the DG Standards Direction in 2010. The DG Standards Direction established the Electricity Connection Distributed Generations Standards (ECDGS) for generation connection customers.
  - Quotation Accuracy Scheme – SLC 15A also requires licensees to establish and operate a Quotation Accuracy Scheme.

**Guidance** – ~~RIIO-ED2 Regulatory Instructions and Guidance: Annex G – Connections  
Connections v2.0~~ [RIIO-ED2 Regulatory Instructions and Guidance: Annex  
G – Connections v2.1](#)

---

**Guidance** – [RIIO-ED2 Regulatory Instructions and Guidance: Annex G – Connections v2.0](#)  
[RIIO-ED2 Regulatory Instructions and Guidance: Annex G – Connections v2.1](#)

---

## Compliance

### SLC 15

3.5 SLC 15 requires the licensee to take reasonable steps in every case to provide the relevant service to the applicant, and without limiting the general effect of that obligation, provide the relevant services, calculated on an annual basis, in at least 90% of each of the following categories:

- providing Quotations (including Point of Connection information) for connections
- responding to design submissions in relation to connections
- completing Final Works and Phased Energisations as Non-Contestable Connection Services.

3.6 Failure to meet the 90% performance metric in any of these categories will result in a breach of SLC 15.

### SLC 15A

3.7 SLC 15A for the standards specifies that the licensee must meet the performance metric of 90% on a quarterly basis in each of the three categorisations:

- all metered quotation and budget estimate standards (in aggregate) (this includes the DG Standards)
- all other metered standards (in aggregate) (this includes DG Standards)
- all unmetered standards (in aggregate).

3.8 Failure to meet the 90% performance metric in any of these categories will result in a breach of SLC 15A.

## Reporting performance

3.9 For reporting purposes, the following principles are applied:

**Guidance** – [RIIO-ED2 Regulatory Instructions and Guidance: Annex G – Connections Connections v2.0](#)  
[RIIO-ED2 Regulatory Instructions and Guidance: Annex G – Connections v2.1](#)

---

- Only services that are covered by the standards are reported, eg where there is an unmetered bilateral agreement these are outside of the standards.
- Where the service has met the prescribed period, these are recorded as a 'pass'.
- Exemptions are only applied where the prescribed period is not met.
- If the prescribed period has not been met and no Exemption can be applied then these are recorded as a 'fail'.

3.10 Reporting of services must relate to the highest voltage of associated works in the quotation provided for the service/activity.

## Working Day and reporting performance against timescales

- 3.11 Any request received by the licensee on or before 17.00 hours on a Working Day (which excludes weekends and relevant bank holidays), should be recorded as being received on that date. Any request received after 17.00 hours on a Working Day should be recorded as being received on the next Working Day. This will be known as the "date of receipt".
- 3.12 The licensee should record their performance in terms of the timescales between the date of receipt of the information required and the date that the relevant information or service is issued to the Customer ("the issue date"). Please refer to chapter 5 on minimum and additional information and SLC 15. The issue date may be different to the date that the Customer receives the information, to allow for postage or any other delays.
- 3.13 The Quotation Issued Date shall be recorded as the Working Day on which the information was issued to the Customer, either electronically or in hard copy. If it has been issued before 23.59 on a Working Day then it will have been deemed to have been sent on that Working Day.

**Guidance** – [RIIO-ED2 Regulatory Instructions and Guidance: Annex G – Connections v2.0](#)  
[RIIO-ED2 Regulatory Instructions and Guidance: Annex G – Connections v2.1](#)

---

3.14 Table 3.1 outlines three examples for dealing with requests received at different times. The same deadlines would apply for stopping the clock on issuing the requested quotation.

Table 3.1: Example for treatment of Working Day timescales

Action	Time	Date	Clock	Timescale for reporting
Application for quotation received	16:50	Monday	Starts	Monday as day zero
Application for quotation received	17:00	Monday	Starts	Monday as day zero
Application for quotation received	14:00	Saturday	Starts	Monday as day zero

**Guidance** – [RIIO-ED2 Regulatory Instructions and Guidance: Annex G – Connections v2.0](#)  
[RIIO-ED2 Regulatory Instructions and Guidance: Annex G – Connections v2.1](#)

---

## Payments

### Application of Payments

- 3.15 The listed payments (see Appendix 1) are due for every Working Day after the specified date or period or agreed date for the relevant Standard. The payments continue for every Working Day until such time as the Standard is met.
- 3.16 The licensee is required under the Regulations to make a payment until such time as the Standard is met. The Electricity Distributor should make either a payment or offset for charges incurred, or to be incurred, in respect of the connection to the Customer of/for the total sum owed.
- 3.17 For Unmetered Standards, a schedule of payments may be provided to the Relevant Authority on a consolidated basis (for instance quarterly) as agreed with the Relevant Authority rather than making individual payments against separate jobs, in accordance with paragraph 14.2 of the Regulations.

### Payment standard

- 3.18 In the event that an Electricity Distributor fails against a metered Standard, it should make the requisite payment within 10 Working Days of the date on which the service was provided. However where a Electricity Distributor has failed against a metered standard that requires a fixed amount to be paid (ie Regulations 4(2) and 4(3)) the requisite payment should be made within 10 days from the date of the failure, ie the due date.
- 3.19 Where the Electricity Distributor fails to make the requisite payment in the timescale detailed in Appendix 1, a further payment must be made in addition to payments due under the original Standard. The value of the payment is set out in Appendix 1 and is based on the date that the payment is due.

### Example

- 3.20 An 'Other' LV Demand quotation is provided 30 Working Days after the minimum information was provided rather than the 25 Working Days required by the

Standard. Using the payment amounts that are applicable between 1 October 2023 and 31 March 2024 inclusive as an example, the penalty payment due under this Standard is £75 for each Working Day that the quotation is late (5 X £75 = £375). If the payment is not made within 10 Working Days of the quotation being issued (in this example by Working Day 40) a further payment of £75 is due. The payment for any of these standards must be made by cheque, cash, electronic payment or through an offset to charges to the relevant Customer for provision of connections. If, for example, the same quotation was issued such that Working Day 30 fell on 31 March, then Working Day 40 would fall in the next Regulatory Year. In these circumstances, if the payment was not made within the 10 Working Days then the payment value would be based on the value applicable to the subsequent year.

## **Payment in relation to commencement, completion and energisation standards**

- 3.21 For the commencement, completion and energisation standards to apply, funds would have to have cleared. Electricity Distributors would normally work on the basis of a cheque received to start a clock but if the funds did not clear, the Electricity Distributor would not continue with the job, the standards would not apply and payment would not be made if the agreed date was not met.

## **SLC 15 and DG Standard payments (voluntary)**

- 3.22 Where the Customer is requesting Non-Contestable connection services to be provided under SLC 15, Electricity Distributors have agreed to map across the payment levels from the Regulations onto the services and timeframes set out in SLC 15A.
- 3.23 Electricity Distributors have agreed with Ofgem that they will treat Customers on a consistent basis and may make voluntary payments to any such Customers if an Electricity Distributor fails to meet the requirements covered by the SLC 15 standards.

**Guidance** – ~~RIIO-ED2 Regulatory Instructions and Guidance: Annex G – Connections v2.0~~  
~~RIIO-ED2 Regulatory Instructions and Guidance: Annex G – Connections v2.1~~

---

- 3.24 Under the DG Standards Direction, a schedule of voluntary payments is provided against each of the DG standards. Electricity Distributors have given an undertaking to apply payments to DG connection services.
- 3.25 Throughout this document, reference to ‘payment’ means, where applicable, voluntary or compulsory compensation paid to the Customer under the Regulations or DG Standards Direction or SLC 15.



## Application of the standards

- 3.26 The standards apply to services provided either to SLC 15A demand connections (under the Regulations) or generation connections (the DG Standards Direction) and to SLC 15 connections. Where an application for a connection includes any work necessary to facilitate the new connection (eg disconnections, diversionary works, extensions) this work would be included as part of the quotation.
- 3.27 Note that the categorisation is based on the type of connection and the associated work and does not necessarily align with how it is treated for charging purposes. For example, an application for a new connection that also includes generation could be classified as generation for the purposes of the standards but as a demand connection for the purposes of charging for any reinforcement necessary.
- 3.28 Where the customer makes a separate request for a disconnection or diversionary works, the activities would not be covered by the connection standards.
- 3.29 These standards do not apply in respect of single premises affected by the circumstances described in Paragraph 1.36 of the Common Connections Charging Methodology. That is, the installation of all equipment at an existing premises which remains connected via an existing low-voltage single, two or three phase service fused at 100 amperes or less per phase which is metered with whole-current metering (and subject to the other provisions described in the CCCM). This would include fuse change, cut-out change, service cable change and service unbundling (de-looping) where the Electricity Distributor is not recovering the costs through making a connection charge to the customer.

## The Regulations (demand connections standards)

- 3.30 The connections standards apply to requests for connection services from Customers or those acting directly on their behalf. The standards do not apply

**Guidance** – [RHO-ED2 Regulatory Instructions and Guidance: Annex G – Connections v2.0](#)  
[RHO-ED2 Regulatory Instructions and Guidance: Annex G – Connections v2.1](#)

---

where the Customer is requesting Non-Contestable connection services only. These are provided under SLC 15.

- 3.31 SLC 15A applies where a dual quote has been provided to the Customer. On acceptance, if this is ‘full acceptance’, all other activities subsequent to accepting the quote, SLC 15A will apply. On acceptance, if only the Non-Contestable activities are accepted, SLC 15 will apply to all other activities subsequent to accepting the quote.
- 3.32 The Regulations only apply to demand Customers and therefore technically, depending on the specific Customer, the Regulations may not actually apply. Where an Electricity Distributor treats an application in good faith as being covered by the standards then the Electricity Distributors will treat the Customers on a consistent basis and make a payment to any such Customers if they fail to meet the requirements covered by the Regulations and report them under the standards.

## **The DG Standards Direction (generation connections standards)**

- 3.33 The DG standards apply to requests for generation connection services from Customers or those acting directly on their behalf. The DG standards do not apply where the Customer is requesting only Non-Contestable connection services to be provided under SLC 15.
- 3.34 The DG standards only apply to generation Customers, and the conditions under the Regulations apply to demand Customers, however in some cases a specific Customer may lie outside the DG standards or the Regulations. Electricity Distributors have agreed with Ofgem that they will treat Customers on a consistent basis and may make voluntary payments to any such Customers if an Electricity Distributor fails to meet the requirements covered by the DG standards or the Regulations.

**Guidance** – ~~RIIO-ED2 Regulatory Instructions and Guidance: Annex G – Connections~~  
~~Connections v2.0~~ [RIIO-ED2 Regulatory Instructions and Guidance: Annex G – Connections v2.1](#)

---

- 3.35 Where the customer notifies the Electricity Distributor that it is installing generation equipment under Single Premises Connection Procedure in the Energy Networks Association’s Engineering Recommendation G98 (and successor documents) or Multiple Premises Connection Procedure in the Energy Networks Association’s Engineering Recommendation G98 or Small Generation Installation procedures 1, 2 and 3 in the Energy Networks Association’s Engineering Recommendation G99 then these would be outside the standards unless a new service is required to the premises.

## **SLC 15 (non-contestable connections standards)**

- 3.36 SLC 15 applies to requests where the Customer requires the host DNO to provide only Non-Contestable services and intends to seek an alternative provider (which may be an Independent Connection Provider (ICP), an Independent Distribution Network Operator (IDNO) or an affiliate of the host DNO) for Contestable services. However, where the DNO also provides final connections works (that are Contestable in the DNO area) then the other SLC 15 standards would still apply to the other services. For example, if the DNO agrees to quote for the final connections work, the Quotation and Design Approval standards in SLC 15 would apply. The provision of the (Contestable) final connection would not be covered by SLC 15.
- 3.37 SLC 15 quotation standards do not apply to bundled requests where the Customer seeks both Contestable and Non-Contestable services from the host DNO, a ‘dual quote’ or ‘transferable quote’. However, parties may choose to accept the Non-Contestable part only of a bundled quote, in which case SLC 15 standards for responding to design submissions for connections, and completing final works and phased energisations for connections all apply. A customer can request a non-Contestable only quote separately, in which case SLC 15 would apply to all the services.

**Guidance** – [RIIO-ED2 Regulatory Instructions and Guidance: Annex G – Connections v2.0](#)  
[RIIO-ED2 Regulatory Instructions and Guidance: Annex G – Connections v2.1](#)

---

- 3.38 Where a party chooses to accept a dual quote for both Contestable and Non-Contestable services, this will be treated in line with the standards provided for under the Regulations and SLC 15A.

## Changes of classification

- 3.39 The voltage category of a connection is taken as being the highest voltage required to complete all Contestable and Non-Contestable works for the new connection. Therefore, where a new connection requires a connection at LV, but reinforcement at HV, then the request shall be included within the HV standard.
- 3.40 For example, an application may by virtue of the load required, appear to require an LV supply. This would get measured against the HV timescale if some HV reinforcement, eg a transformer upgrade was required, to allow the connection to be made.
- 3.41 The consideration of the work required will also take account of operational as well as physical work. For example:
- If work is required at a primary substation to provide the connection, eg a new primary substation breaker needs to be installed, then the EHV timescales would apply.
  - If the work to make the connection just involved the operation of an HV primary circuit breaker to allow an HV joint to be made then HV timescales would continue to apply.
  - If an LV connection required a pole mounted transformer to be shut down to allow the LV connection to be made then HV timescales would apply.
  - The same principle would apply at other voltage levels.
- 3.42 The Electricity Distributor will initially classify the job based on their reasonable expectation of the highest voltage of the connection or associated works. If the Electricity Distributor is able to find a solution which benefits the Customer but comes out at a voltage level lower than their original assessment, then the

**Guidance – ~~RIIO-ED2 Regulatory Instructions and Guidance: Annex G – Connections~~  
~~Connections v2.0~~RIIO-ED2 Regulatory Instructions and Guidance: Annex  
 G – Connections v2.1**

---

prescribed period will be that associated with the higher original voltage level, ie the project will be reported at the voltage level of the quotation issued.

- 3.43 For example, if the initial assessment of an application looks like an HV supply is required but, through additional analysis, the Electricity Distributor is able to make the connection at LV, then the Electricity Distributor would categorise the quotation as an HV project based on its initial assessment and would therefore have 35 days (or 65 days under DG standards) to meet the standard. Although the final quotation would be reported as an LV quotation, the initial assessment and the associated prescribed period would still apply. This ensures that the Electricity Distributor is not disadvantaged in finding a better solution for the Customer.
- 3.44 However, an exception is where an SLC 15 job initially classified at HV is reclassified as EHV after the prescribed period for issuing POC information, then the POC information shall be provided as soon as reasonably practicable.
- 3.45 Subsequent phases of a connection job should be categorised (eg HV or LV) and follow the requisite standards in accordance with the voltage of the project provided in the actual quotation that is issued.
- 3.46 Where the Electricity Distributor is making a charge to the Customer for previously completed reinforcement work (“reinforcement reappportionment” or “second comer” charges under the Electricity (Connection Charges) Regulations (ECCRs)) not initiated by that application, then the voltage of those works would not be considered in the classification of the job.
- 3.47 For example, if the application requires an HV supply but there are some EHV reappportionment charges from a connections reinforcement project initiated by another application to be charged to the Customer, then the application would be classified as an HV demand and have 35 days (or 65 days under DG standards) to meet the standard.

## Application where a service combines demand and generation

- 3.48 Where any demand application also involved any element of generation the following classification shall apply (this applies vice versa for the DG Standards Direction):
- If the generation associated with the application is a single installation covered by the Single Premises Connection Procedure in the Energy Networks Association’s Engineering Recommendation G98 (and successor documents), and a new connection is required, the application would be treated as a demand application and subject to the Regulations.
  - If the generation associated with the application is a planned installation of multiple installations covered by the Multiple Premises Connection Procedure in the Energy Networks Association’s Engineering Recommendation G98 (and successor documents), and new connections are required, the application would be treated as a generation application and subject to the DG standards.
  - If the generation associated with the application is covered by the Energy Networks Association’s Engineering Recommendation G99 (and successor documents), which covers the connection of embedded generating plant to the Electricity Distributor’s network, the application would be treated as a generation application and subject to the DG standards.
- 3.49 Where the demand application involves any generation as defined above, the applications would not apply under the Regulations for the following standards:
- ECGS 3A-C
  - Other metered standards, ie ECGS 4A-7C.

## Agreement of dates

- 3.50 The Electricity Distributor should wherever practicable seek to meet the reasonable requirements of the Customer. In cases where the Customer and the Electricity Distributor cannot agree to commencement or completion dates then

**Guidance** – ~~RIIO-ED2 Regulatory Instructions and Guidance: Annex G – Connections~~  
~~Connections v2.0~~ RIIO-ED2 Regulatory Instructions and Guidance: Annex  
G – Connections v2.1

---

the dates proposed by the Electricity Distributor will be used as a basis for the standards. Any dispute can be dealt with on a contractual basis or through the Electricity Distributor's complaint procedures.

- 3.51 The SLC 15 standards relating to final works and energisation are subject to the Customer ensuring that all "conditions precedent" are met. Further information on conditions precedent is outlined in chapter 4.
- 3.52 Where conditions precedent are met, the licensee is required to complete final works for low and high voltage connections within a prescribed timescale. For extra high voltage connections, the licensee is obliged to provide the Customer with the planned date for final works within a prescribed timescale. Additionally the licensee should complete final works at extra high voltage as soon as reasonably practicable.
- 3.53 The Customer may request a date later than the SLC 15 prescribed timescale with the agreement of the licensee. This becomes an agreed date.
- 3.54 For SLC 15 EHV final works, the licensee is required to issue a planned date within a prescribed timescale, and complete the works within a reasonable period.
- 3.55 Where a Customer seeks to reschedule the Electricity Distributor's proposed dates for commencement, completion or energisation, then the Electricity Distributor should look to accommodate this wherever practicable. Where agreed, the revised dates will form the basis of the standards for commencement, completion and energisation of the works.
- 3.56 Where the Electricity Distributor wants to change the agreed date and the Customer agrees then the standard will then be set and monitored/reported on the new date.
- 3.57 Where the Electricity Distributor wants to change the agreed date due to a change in circumstances covered by Extension of Time in these standards then the standard will then be set and monitored/reported on the new date. The

**Guidance** – [RIIO-ED2 Regulatory Instructions and Guidance: Annex G – Connections v2.0](#)  
[RIIO-ED2 Regulatory Instructions and Guidance: Annex G – Connections v2.1](#)

---

Electricity Distributor would be expected to keep adequate records for audit purposes.

- 3.58 Where the Electricity Distributor wants to change the agreed date (in situations not covered by Exemptions or Extension of Time under these standards, see chapter 4), and the Customer does not agree to change, the original date will stand, and the Electricity Distributor will pay Customer penalty payments from the original date if it fails to deliver the service by the original date.
- 3.59 Where an Electricity Distributor has attempted to contact the Customer but has been unable to do so, based on the contact information provided, then the Electricity Distributor will be deemed to have met the standard. The Electricity Distributor would be expected to keep adequate records for audit purposes.

## Agreed date examples

- 3.60 A target date to commence (or complete) the connection is initially agreed between the Electricity Distributor and the Customer. If a revised date is subsequently agreed this resets the agreed date for the works to take place. It is not reported as an exemption. If the Electricity Distributor fails to meet the agreed date this is classed as a failure and will attract a financial penalty and ongoing failure until the breach is resolved. This also applies if a revised agreed date is not met.
- 3.61 In response to a failure, the Electricity Distributor has the opportunity to make a voluntary payment to the Customer in accordance with the DG standards as outlined in the DG Standards Direction.
- 3.62 The following are examples of scenarios that illustrate how agreed dates will work in practice:

### Scenario A:

- 3.63 Electricity Distributor and Customer agree a date of 1 October (agreed date) for Electricity Distributor to attend site and undertake HV final works. Electricity Distributor attends on agreed date and works are completed - not a failure.



**Guidance** – [RIIO-ED2 Regulatory Instructions and Guidance: Annex G – Connections Connections v2.0](#)  
[RIIO-ED2 Regulatory Instructions and Guidance: Annex G – Connections v2.1](#)

---

Scenario A (1):

- 3.64 Electricity Distributor realises that it won't be able to meet 1 October so contacts the Customer in advance to agree a revised date – Customer not happy and insists on 1 October – if Electricity Distributor then fails to attend site on 1 October it will pay compensation payments until it completes works - treated as a failure.

Scenario B:

- 3.65 Electricity Distributor realises that it won't be able to meet 1 October so contacts the Customer in advance to agree a revised date – Customer accepts revised date of 15 October. The agreed date is reset to the revised agreed date of 15 October. Electricity Distributor subsequently commences works on 15 October - not a failure.

Scenario B (1):

- 3.66 Electricity Distributor realises that it won't be able to meet 1 October so contacts the Customer in advance to agree a revised date – Customer accepts revised date of 15 October. Electricity Distributor does not commence on 15 October so it pays compensation payments until works are complete - treated as a failure.

Scenario B (2):

- 3.67 Electricity Distributor realises that it won't be able to meet 1 October so contacts the Customer in advance to agree a revised date – Customer accepts revised date of 15 October. Electricity Distributor attends site on 15 October, however, Customer is not ready for HV final works (not a failure). This will require the Electricity Distributor to specify and ideally agree with the Customer a further date (as an Extension of time) so this will eventually result in a revised date being set.

Scenario C:

- 3.68 Customer realises that it won't be ready for Electricity Distributor to commence on 1 October so contacts the Electricity Distributor to request a revised date of 5

**Guidance** – ~~RIIO-ED2 Regulatory Instructions and Guidance: Annex G – Connections~~  
~~Connections v2.0~~ RIIO-ED2 Regulatory Instructions and Guidance: Annex  
G – Connections v2.1

---

October – Electricity Distributor is unable to commence until 15 October and both parties agree on this date. Electricity Distributor meets the 15 October timeframe - not a failure.

Scenario C (1):

- 3.69 Customer realises that it won't be ready for Electricity Distributor to commence on 1 October so contacts the Electricity Distributor to request a revised date of 5 October – Electricity Distributor is unable to commence until 15 October and both parties agree on this date. However, Electricity Distributor does not meet the revised agreed date of 15 October so it pays compensation payments until works are complete - treated as a failure.

Scenario C (2):

- 3.70 Customer realises that it won't be ready for Electricity Distributor to commence on 1 October so contacts the Electricity Distributor to request a revised date of 5 October – Electricity Distributor is unable to commence until 15 October and both parties agree on this date. Electricity Distributor attends site on 15 October but the Customer is not ready and site is not prepared (not a failure). This will require the Electricity Distributor to specify and ideally agree with the Customer a further date (as an Extension of time) so this will eventually result in a revised date being set.

Failure to agree a date

- 3.71 Where a standard specifies actions to be taken by an agreed date, the Electricity Distributor should take all reasonable steps to agree a date with the Customer or his representative. In the event that a date cannot be agreed, the Electricity Distributor does not fail the standard. The Electricity Distributor should publicise its complaint handling procedure to ensure that the Customer is able to address the matter adequately with the Electricity Distributor prior to a formal referral to the Ombudsman or Authority.

## 4. Exemptions and Extensions (SLC 15 and SLC 15A)

### Exemptions

- 4.1 If the Electricity Distributor fails to meet a prescribed period or agreed date this is classed as a failure unless a valid exemption is applicable.
- 4.2 In situations where a standard is failed, and an Exemption is applied, then the requirements to make a payment if the agreed date or the prescribed period is not met is waived, as the standard has been deemed to have not been failed.
- 4.3 The number of exemptions reported in any given quarter will be monitored through regular reporting.
- 4.4 In many circumstances, the Electricity Distributor will still be required to carry out the service, just that the standards would not apply, or there would be no payments applicable. In some circumstances, depending on the specific Exemption invoked (such as the Customer no longer wishing the Electricity Distributor to take any action) the Electricity Distributor would not be required to carry out the service.
- 4.5 The use of Exemptions will only apply, in accordance with the Regulations and DG Standards Direction where the Electricity Distributor has made reasonable efforts to notify the Customer or the Relevant Authority (as appropriate) of the occurrence of such circumstances as soon as reasonably practicable after their occurrence (15(1) and Condition 5(1) of the DG Standards Direction).
- 4.6 Where a standard specifies actions to be taken by an agreed date, the Distributor should take all reasonable steps to agree a date with the customer or his representative. In the event that a date cannot be agreed, the Distributor does not fail the standard. The Distributor should publicise its complaint handling procedure to ensure that the customer is able to address the matter adequately with the Distributor prior to a formal referral to the Ombudsman or Authority.

**Guidance – [RIIO-ED2 Regulatory Instructions and Guidance: Annex G – Connections](#)  
[Connections v2.0](#)  
[RIIO-ED2 Regulatory Instructions and Guidance: Annex G – Connections v2.1](#)**

- 4.7 Where the standard specifies an action to be taken by a date agreed with the Customer and subsequently a revised date is agreed, this new date will stand. If the Electricity Distributor fails to meet the agreed date this is classed as a failure unless a valid Exemption is applicable.
- 4.8 Table 4.1 provides a comparison of the Common Exemptions that can be used under SLC 15A and SLC 15. The policy intention is to apply the two sets of Exemptions as a common set of Exemptions.

Table 4.1 Common Exemptions

Common Exemption category	SLC 15A	SLC 15
1. By Authority consent	15A.27 - The Authority may, after consulting with the licensee, give a direction (“a derogation”) to the licensee that relieves it of its obligations under this condition to such extent, for such period of time, and subject to such conditions as may be specified in the direction.	15.5(a) if and to the extent that the Authority consents otherwise.
2. No action required	The Customer informs the Distributor before the contravention time that he or it does not wish the Distributor to take any action or further action in relation to the matter (Regulation 15(2)).	15(e) if it is not reasonable in all the circumstances of the case for the licensee to be required to do so.
3. Action taken is required action	The Customer agrees with the Distributor that action taken by the Distributor before the contravention time is treated as the action required. Where this action includes a promise to perform an activity (whether before or after the contravention time) that promise must be kept (Regulation 15(3)).	15.5(b) if the applicant asks for a lower standard than is set out in the Table to be applied to a relevant service in any particular case.
4. Information provided to incorrect address	Where information is required from the Customer and it is provided to an address, telephone number or e-mail account other than that stated and publicised by the Distributor.	15(e) if it is not reasonable in all the circumstances of the case for the licensee to be required to do so.
5. Industrial Action	Industrial action by employees of the relevant operator or its agent (15.6a).	15(e) if it is not reasonable in all the circumstances of the case for the licensee to be required to do so.
6. Default of someone other than the DNO	The act or default of a person other than an officer or employee or agent of the DNO.	15(e) if it is not reasonable in all the circumstances of the

**Guidance –** [RIIO-ED2 Regulatory Instructions and Guidance: Annex G – Connections](#)  
[Connections v2.0](#) [RIIO-ED2 Regulatory Instructions and Guidance: Annex](#)  
[G – Connections v2.1](#)

Common Exemption category	SLC 15A	SLC 15
		case for the licensee to be required to do so.
7. No access	<p>The inability of the Distributor to obtain necessary access to any premises. This might include:</p> <ul style="list-style-type: none"> <li>• circumstances where the Distributor could not access a site due to floods</li> <li>• road closures</li> <li>• inability to secure appropriate Traffic Management Act requirements or street works notices/permits</li> <li>• other parties completing works at the site, eg other utilities</li> <li>• another service in the ground causing obstructions</li> <li>• obstructions such as skips or scaffolding restricting access to the works area</li> <li>• discovery of tree roots and action taken as per the current issue of the National Joint Utilities Group Guidelines for the Planning, Installation and Maintenance of Utility Services in Proximity to Trees</li> <li>• health, safety or environmental issues which were unknown at the time of planning the works and which cannot be averted in order to safely undertake the works.</li> </ul>	<p>15(d) if the licensee is prevented from doing so by circumstances not within its control, ie no access.</p> <p>Alternatively as the ICP/IDNO would also be affected by no access issues, DNO should reschedule if conditions precedent not met.</p>
8. Breach of health & safety or other legislation	<p>Circumstances under which the Distributor could reasonably expect that taking the action would or would likely to be in breach of an enactment, including any directions given by the Secretary of State under measures to preserve the security of buildings or installations relating to generation, transmission or supply of electricity under Section 96 of the Electricity Act 1989.</p>	<p>If compliance by the licensee would be likely to cause the licensee to breach regulations made under section 29 of the Act (so long as the licensee has taken all reasonable steps to prevent such breach from occurring).</p>
9. Civil Contingencies Act	<p>The effects of an event for which emergency regulations have been made under part 2 of the Civil Contingencies Act 2004.</p>	<p>15(e) if it is not reasonable in all the circumstances of the case for the licensee to be required to do so.</p>
10. Other exceptional events	<p>Any other circumstances of an exceptional nature beyond the control of the DNO (15.6f).</p>	<p>15(e) if it is not reasonable in all the circumstances of the case for the licensee to be required to do so.</p>

**Guidance – ~~RIIO-ED2 Regulatory Instructions and Guidance: Annex G – Connections~~  
Connections v2.0**  
**~~RIIO-ED2 Regulatory Instructions and Guidance: Annex G – Connections v2.1~~**

Common Exemption category	SLC 15A	SLC 15
11. Frivolous or vexatious request	The Electricity Distributor reasonably considers the information given by the customer or the relevant authority is frivolous or vexatious.	15(e) if it is not reasonable in all the circumstances of the case for the licensee to be required to do so.
12. Unlawful offence	The Electricity Distributor reasonably considers that the customer or the relevant authority has committed an offence under paragraph 6 of Schedule 6 to the Act, or under paragraph 11 of Schedule 7 of the Act (Regulation 15(8)).	15(e) if it is not reasonable in all the circumstances of the case for the licensee to be required to do so.
13. Contrary to the Act or applicable Industry codes (Unmetered Standards only)	The existence in relation to the required connection of any matter or event that is contrary to any regulations made under paragraph 1(1A) of Schedule 7 to the Act or to the applicable provisions of any industry code maintained in accordance with the conditions of the electricity distribution licence and with which the Electricity Distributor is required to comply.	15(e) if it is not reasonable in all the circumstances of the case for the licensee to be required to do so.
14. The total number of units exceeds 115% of the monthly average for the last calendar year (Unmetered Standards only)	The notice requesting the offer of terms causes the total number of units of street lighting or other street furniture for which such a notice has been given by the relevant authority to the Electricity Distributor in the month to exceed 115% of the monthly average for the calendar year last ending prior to the start of that month where this has not been pre-agreed (where “monthly average” means, in respect of a calendar year, the total number of units of street lighting or other street furniture for which such a notice was given by the relevant authority to the Electricity Distributor during that calendar year, divided by 12).	15(e) if it is not reasonable in all the circumstances of the case for the licensee to be required to do so.
15. Dispute (Payment failure standard only (ECGS 12))	There is a genuine dispute between the Electricity Distributor and the customer or relevant authority as to whether the Electricity Distributor is obliged to make the payment.	15(e) if it is not reasonable in all the circumstances of the case for the licensee to be required to do so.
16. No contact details (Payment failure standard only (ECGS 12))	Failure to make a payment only.  The Electricity Distributor does not have, for the customer or relevant authority (as appropriate), a postal address in Great Britain or bank account details to which the payment could be sent, and has made reasonable endeavours to obtain such an address or details.	15(e) if it is not reasonable in all the circumstances of the case for the licensee to be required to do so.

**Guidance** – ~~RIIO-ED2 Regulatory Instructions and Guidance: Annex G – Connections  
Connections v2.0~~ [RIIO-ED2 Regulatory Instructions and Guidance: Annex  
G – Connections v2.1](#)

---

**Guidance** – [RIIO-ED2 Regulatory Instructions and Guidance: Annex G – Connections v2.0](#)  
[RIIO-ED2 Regulatory Instructions and Guidance: Annex G – Connections v2.1](#)

## Extensions of Time

4.9 Extensions of Time are covered by Regulation 16 (and Condition 6 of the DG Standards Direction). In the circumstances covered in the Regulations and DG Standard Direction the Electricity Distributor is able to extend an agreed date, by a reasonable date (note that in each case the agreed date will be extended by such a reasonable period of time or to a reasonable new date as the Electricity Distributor may specify). However, the change in timescales will only be effective if the Electricity Distributor contacts the customer within a reasonable period of time following the circumstances concerned to communicate the applicable period or date for the change.

4.10 Extensions of Time apply to the following services:

<b>Reporting code</b> <b>(ECGS no)</b>	<b>Service</b>	<b>Reg. Ref.</b>
5	Commence LV,HV & EHV demand works on Customer's site	9(5)
6A	Complete service connection works	8(3)
6B	Complete LV works (including phased works)	9(6)
6C	Complete HV works (including phased works)	9(7)
6D	Complete EHV works (including phased works)	9(8)
7A	Complete LV energisation works (including phased works)	9(9)
7B	Complete HV energisation works (including phased works)	9(10)
7C	Complete EHV energisation works (including phased works)	9(11)
10A	New works order -completion of works on a new site	12(2)
10B	New works order -completion of works on adopted highways	12(3)



**Guidance –** [RIIO-ED2 Regulatory Instructions and Guidance: Annex G – Connections v2.0](#)  
[RIIO-ED2 Regulatory Instructions and Guidance: Annex G – Connections v2.1](#)

<b>Reporting code  (ECDGS no)</b>	<b>Service</b>	<b>Cond. Ref.</b>
5	Commence LV, HV & EHV generation works on Customer's site	4(5)
6B	Complete LV works (including phased works)	4(6)
6C	Complete HV works (including phased works)	4(7)
6D	Complete EHV works (including phased works)	4(8)
7A	Complete LV Energisation works (including phased works)	4(9)
7B	Complete HV Energisation works (including phased works)	4(10)
7C	Complete EHV Energisation works (including phased works)	4(11)

4.11 Extensions of Time can be due to the circumstances described below:

- Severe weather conditions that in themselves prevent the Electricity Distributor from carrying out the requisite work or which fall into categories 1 or 2 of severity as defined in the Electricity (Standards of Performance) Regulations 2015 as amended and cause the Electricity Distributor, acting reasonably, to postpone pre-planned works in order to restore supplies to customers as quickly as possible (Regulation 16(4a)).
- A network system emergency that causes the Electricity Distributor, acting reasonably, to redirect its resources and thereby prevents it from completing any action required by these regulations (Regulation 16(4b)).
- An inability to undertake live working on the distribution system because of compliance with safety procedures in circumstances where the Electricity Distributor would normally expect to undertake such working and where this restriction has a material impact on the timescale for completion of the works (Regulation 16(4c)). For example this could include where the works are reasonably planned to be carried out:
  - using live line working techniques but unexpected circumstances such as severe bad weather conditions or adverse site conditions result in it being not practicable to comply with safe working practices and procedures
  - using live LV jointing practices on underground cables but upon excavation the cable is found to be of a non-standard type for which no safe working procedures exist, eg steel wired armoured cables
  - using switchgear normally capable of live operation but where subsequently it has become subject to a restriction on its capability for safety purposes.

4.12 Delays imposed by a requirement to obtain a permit for street works under the Traffic Management Act 2004 or the New Roads and Street Works Act 1991 due to a delay imposed by the relevant highway authority that prevents the Electricity Distributor from commencing the work (Regulation 16(4d)).

**Guidance** – [RIIO-ED2 Regulatory Instructions and Guidance: Annex G – Connections v2.0](#)  
[RIIO-ED2 Regulatory Instructions and Guidance: Annex G – Connections v2.1](#)

- 4.13 For example, if an Electricity Distributor receives an order for 80 units of unmetered work but a ten day street works notice is required, then the clock would be extended when the relevant notice is applied for and the Extension of Time applied to take account of the delay until the notice takes effect. In the example below the standard would be met.

Action	Clock	Date	Timescale for reporting
Electricity Distributor receives order from LA	Started	Tuesday	Day 0
Electricity Distributor confirms that a ten day TMA notice is required and informs the LA	Continues	Thursday	Day 2
Electricity Distributor applies for TMA notice	Pauses	Friday	Day 3
Start of TMA notice ten days later	Resumes	Tuesday	Day 3
Electricity Distributor completes last unit on order	Stopped	Thursday	Day 30

- 4.14 Restrictions imposed by Highway Authorities that restrict normal working would also cover extensions of time. Christmas embargoes or Political Party conferences in city centres for example could apply.
- 4.15 Delays in obtaining any necessary consents or rights, and/or in acquiring any necessary interest in land, in relation to the location of electric lines and electrical plant needed to provide the connection. The Electricity Distributor would need to be able to demonstrate that it had taken reasonable steps to secure such consents (Regulation 16(4e)).
- 4.16 Works that are stated in the accepted quotation to be a prerequisite to the commencement or completion of the works and that are not the responsibility of the Electricity Distributor, have not been completed to the agreed manner or within the time agreed (Regulation 16(4f)).

**Guidance – ~~RIIO-ED2 Regulatory Instructions and Guidance: Annex G – Connections~~  
~~Connections v2.0~~RIIO-ED2 Regulatory Instructions and Guidance: Annex  
 G – Connections v2.1**

---

- 4.17 For example, if an Electricity Distributor receives an order for 80 units of unmetered work but for some of these the erection notification has not been received by the Electricity Distributor, then the clock would not start until the Electricity Distributor has received confirmation that all the columns are erected.
- 4.18 Any other matters stated in the accepted quotation to be a prerequisite to the commencement or completion of the works and that are not the responsibility of the Electricity Distributor, and have not been satisfied in the manner or within the time envisaged by the accepted quotation (Regulation 16(4g)).
- 4.19 In the event that the Electricity Distributor cannot access the work site safely to complete works for a fault or connection service the clock will restart. The Electricity Distributor will contact the designated customer contact from the site if these events occur and will agree a course of action to manage the issue. Examples of these events include:
- road closures
  - other parties completing works at the site, eg other utilities
  - another service in the ground causing obstructions
  - obstructions such as skips or scaffolding restricting access to the works area
  - discovery of tree roots and action taken as per the current issue of the National Joint Utilities Group Guidelines for the Planning, Installation and Maintenance of Utility Services in Proximity to Trees.
  - health, safety or environmental issues which were unknown at the time of planning the works and which cannot be averted in order to safely undertake the works.
- 4.20 Extensions of Time occur when specified circumstances arise outside the normal procedures for making new connections, arise. For instance, where the Electricity Distributor cannot gain access to the work site safely as specified in Regulation 15(6) (a)-(e), the timeframe may be extended. However the change in timescales would only apply if the Electricity Distributor contacts the Customer within a reasonable period of time following the circumstances concerned.

**Guidance** – [RIIO-ED2 Regulatory Instructions and Guidance: Annex G – Connections](#)  
[Connections v2.0](#)  
[RIIO-ED2 Regulatory Instructions and Guidance: Annex G – Connections v2.1](#)

---

- 4.21 In circumstances where the Electricity Distributor is unable to complete a UMS fault repair due to, for instance, the delays associated with a need to serve a New Roads and Street Works Act (NRSWA) notice, the only recourse open to an Electricity Distributor is to apply an Exemption.
- 4.22 Additional examples of reasons that could affect the normal procedure for making new connections are:
- A requirement for a cable shutdown, requiring five Working Days' notice.
  - If it is necessary for wayleave(s) or easement(s), NRSWA notice or other consent to be obtained. In this case the Extension of Time could be applied to account for the extended time needed from when the notice is applied for until the notice takes effect.
  - The Electricity Distributor is waiting for a decision from the Customer which materially affects the commencement of the work.
  - Restrictions imposed by Highway Authorities that restrict normal working.
  - Christmas embargoes or Political Party conferences in city centres may also apply.
  - Where certain notices indicating completion of preceding work, eg erection notifications for unmetered columns have not been received.
- 4.23 Therefore, where one or more of the Extensions of Time specified in Regulation 16 are applied, the standards are not breached.
- 4.24 The Electricity Distributor still needs to deliver the service and the new extended date is then the date that the Electricity Distributor must meet to comply with the Regulations or DG Standards Direction. Failure to meet the new extended date would result in the appropriate payment being made, unless a valid exemption applies.
- 4.25 In accordance with 16(1) of the Regulations and Condition 6(1) of the DG Standards Direction, Extensions of Time apply in specific circumstances where the need for an extended period to be set, (as specified by the Electricity Distributor), but only after reasonable efforts have been made to notify the Customer, within a reasonable time, of this new date or period, after the

circumstance has arisen (16(2) and Condition 6(2) of the DG Standards Direction). This new date or period can be before or after the original date or period.

- 4.26 In relation to delays in obtaining any necessary consents or rights, and/or in acquiring any necessary interest in land (with respect to the location of electric lines and electrical plant needed to provide the connection), the Electricity Distributor would need to be able to demonstrate that it had taken reasonable steps to secure such consents.

## Conditions precedent

- 4.27 The Electricity Distributor should make clear in its quotation any works or other requirements ('conditions precedent') to be met by the Customer prior to connection taking place. These may include trenching or other civil works. As set out in the "Extensions of Time" section above, the time period originally agreed may be extended where stated prerequisites that are the responsibility of the Customer or another third party have not been met.
- 4.28 Where the Customer is not ready for completion of the connection works on the agreed date, the Extension of Time provisions above apply. This would also apply to commencement date and energisation.
- 4.29 Where the host DNO has agreed to adopt the assets being installed by a suitable accredited connections provider (under SLC 15), the conditions precedent set out below require the applicant to ensure that the following occurs prior to the date of final works or phased energisation:
- legal requirements are completed to the normal accepted DNO status (this status varies between licensees) including relevant adoption obligations, third party consents and the requirements for notices under the New Roads and Street Works Act ("NRSWA"), and

**Guidance** – [RIIO-ED2 Regulatory Instructions and Guidance: Annex G – Connections v2.0](#)  
[RIIO-ED2 Regulatory Instructions and Guidance: Annex G – Connections v2.1](#)

- all relevant and substantive Contestable works are completed prior to the connection date, including pre-commissioning, any required witnessing by the DNO, the provision to the DNO of all test documentation and as installed information.

4.30 All requests for final works and phased energisation under SLC 15 are subject to completion by the licensee of all necessary Non-Contestable works. The works required and associated timescales should be detailed in the quotation offered to the applicant and/or within the Adoption Agreement. The licensee should use reasonable endeavours to complete Non-Contestable works as planned in every case.

## Cancellation of works by the Customer

4.31 If the Customer becomes aware that the final connection date is not achievable and notifies the Electricity Distributor to cancel final connection works within a reasonable timescale then the Customer will only be liable for directly related abortive costs that the Electricity Distributor has incurred or will incur. If the Customer fails to provide cancellation notice within a reasonable timescale then they will be liable for all abortive costs incurred by the Electricity Distributor.

Table 4.2 outlines the reasonable timescales for cancellation.

Table 4.2: Reasonable timescales for cancellation of on-site connection work

Activity	Type of Connection		
	Low voltage (does not exceed 1kV)	High voltage (exceeds 1kV; does not exceed 22kV)	Extra high voltage (exceeds 22kV; does not exceed 72kV)
Reasonable cancellation period for applicant	5 Working Days prior to planned connection date	10 Working Days prior to planned connection date	To be agreed within the final connection process

## Cancellation by the Electricity Distributor

4.32 The Electricity Distributor is able to withdraw a proposed date for SLC 15 final works or Energisation five Working Days or less before the agreed date if the

**Guidance** – ~~RIIO-ED2 Regulatory Instructions and Guidance: Annex G – Connections~~  
~~Connections v2.0~~ [RIIO-ED2 Regulatory Instructions and Guidance: Annex G – Connections v2.1](#)

---

Electricity Distributor is not satisfied that the conditions precedent will be met, unless another agreement is reached with the Customer. In such cases the Electricity Distributor must contact the Customer prior to the original agreed date to specify or agree an alternative date.

- 4.33 Where the Electricity Distributor attends on-site to carry out connections works and finds that the Customer is not ready (for example any specified trenching works have not been carried out), the Extension of Time provisions set out above will apply. This will also apply where the Electricity Distributor is not able to access or install equipment due to an obstruction such as scaffolding. It is important that the Electricity Distributor sets out clearly what the Customer must do prior to connection taking place, and communicate promptly with the Customer or his agent if prerequisites to connection have not been met.



**Guidance** – [RIIO-ED2 Regulatory Instructions and Guidance: Annex G – Connections v2.0](#)  
[RIIO-ED2 Regulatory Instructions and Guidance: Annex G – Connections v2.1](#)

---

## 5. Minimum and additional information (SLC 15 and SLC 15A)

- 5.1 A number of the standards are dependent upon provision by the Customer of a minimum level of information and in some circumstances additional information as requested by the Electricity Distributor. The Electricity Distributor will identify minimum requirements in its connection charging document. This document is published on the Electricity Distributors' websites.
- 5.2 The standards impacted by these requirements are:
- Metered and DG connections
    - Budget estimates
    - Quotations
  - Unmetered connections
    - Quotations
    - Emergency response
    - Fault notifications

### Minimum information

- 5.3 Minimum information is information provided by the Customer that is required by the Electricity Distributor in order for it to provide the service under the standard.
- 5.4 Each licensee should publish on their website a set of minimum information reasonably required to provide a quotation and this should be reflected in any application forms issued by the licensee. This should allow the Customer the best chance to provide this information upfront with their request.
- 5.5 The licensee will start the clock on receipt of the minimum information. The standards of performance (including DG standards) do not apply until the

**Guidance** – [~~RIIO-ED2 Regulatory Instructions and Guidance: Annex G – Connections Connections v2.0~~](#)[~~RIIO-ED2 Regulatory Instructions and Guidance: Annex G – Connections v2.1~~](#)

---

Customer requesting the connection has provided the licensee with the minimum information that the licensee needs in order to complete the request.

- 5.6 The Customer may provide the minimum level of information either by completion of an applicable application form or by other reasonable means.
- 5.7 Where the licensee has received information that appears to be intended as minimum information for the provision of the service but is found to be incomplete, the licensee will notify the Customer of the missing information as soon as is reasonably practicable and normally within 10 Working Days. However, this time scale is not subject to a guaranteed standard.

## Minimum information for metered and DG connections standards

- 5.8 The Start Date, for metered, unmetered and DG metered standards (ie for the provision of quotes and budget estimates), will be determined by the receipt of all necessary information (see minimum information below) and payment of any relevant fees.
- 5.9 Each licensee should publish on their website a set of minimum information reasonably required to provide a quotation and this should be reflected in any application forms issued by the licensee.
- 5.10 If a licensee needs to make a site visit to gather minimum information in order to provide a quotation then the licensee shall normally contact the Customer to arrange the site visit within 5 Working Days. Once the minimum information is received the GSoP period will commence.
- 5.11 If a licensee needs to make a site visit to gather other information beyond the minimum information then the licensee shall normally contact the Customer within 5 Working Days to arrange said site visit. Once this appointment is made the clock can be paused in agreement with the customer.

**Guidance – ~~RIIO-ED2 Regulatory Instructions and Guidance: Annex G – Connections~~  
~~Connections v2.0~~RIIO-ED2 Regulatory Instructions and Guidance: Annex  
 G – Connections v2.1**

---

- 5.12 In all situations the contact with the Customer should be within the prescribed period for the specific project otherwise it will be treated as a fail. The actual site visit will normally be within 10 Working Days and the clock will start the next Working Day after the site visit has taken place.
- 5.13 Where the Customer makes a material change to their initial application, which prompts redesign of the licensee's proposal, then this will be treated as a new application and the clock will be reset to zero. Where the Customer has made a minor modification, the licensee will wherever practical continue to provide the quotation within the prescribed period with the clock remaining on the original timescale.
- 5.14 Where the DNO's Quotation requires payment on acceptance then the payment must be received in order for the acceptance to be completed. The Acceptance Date will be the later of the date the written acceptance is received or the date the payment is received. For example if the customer does not include a cheque with the signed acceptance, then it will be when the cheque is received that the Quotation will have been accepted. If the DNO's Quotation does not require payment on acceptance, eg the DNO invoices once the written acceptance is received, or payment is not required until a later date, then it is the date of the written acceptance that will determine the Acceptance Date.
- 5.15 In circumstances where Customers send payment but wish to discuss specific terms in the licensee's quotation, then acceptance would only be taken to having been completed when these discussions had been completed, new terms agreed and an agreed offer has been accepted.
- 5.16 The Electricity Distributor should provide as much detail of their information requirements publicly to potential applicants. This will ensure that Electricity Distributors can expect a good level of information from Customers with which they can provide a budget estimate or quotation.
- 5.17 The minimum information required for a metered budget estimate is:

**Guidance** – ~~RIIO-ED2 Regulatory Instructions and Guidance: Annex G – Connections~~  
~~Connections v2.0~~ RIIO-ED2 Regulatory Instructions and Guidance: Annex  
G – Connections v2.1

---

- Customer name and address (correspondence address), other contact details and preferred method of contact
- Site address
- Site plan at an appropriate scale to indicate the site boundary
- Indicative date when the Customer requires the connection(s) to be made
- Total maximum capacity (kVA) requirement
- Summary technical details of any electricity generator that is required to operate in parallel with the supply
- Summary technical details of any Customer owned equipment that is likely to cause disturbance to the electricity supply (i.e. large motors, welders etc)
- Any payment that is required to be made in advance for the service to be provided.

5.18 The minimum information required for a metered quotation is:

- Customer name and address (correspondence address), other contact details and preferred method of contact.
- Site address.
- Site plan at an appropriate scale ~~to that~~ indicates the site boundary (typically outlined with a red line), the layout of buildings and roads, and where the Customer expects, or the proposed location of, a substation(s). The plan should be free of unnecessary detail and be suitable for use as a background layer for the Electricity Distributor proposal drawing.
- Proposed location of each metering point.
- Letter of authority where the applicant is acting as an agent of the Customer.
- Date when the Customer requires the connection(s) to be made.

**Guidance** – ~~RIIO-ED2 Regulatory Instructions and Guidance: Annex G – Connections~~  
~~Connections v2.0~~ RIIO-ED2 Regulatory Instructions and Guidance: Annex  
G – Connections v2.1

---

- Maximum capacity (kVA) at each metering point to be connected (for Domestic Premises the Electricity Distributor may require a description of the premises and whether electric space and water heating is to be installed).
- Technical details of any electricity generator or storage device that is required to operate in parallel with the supply, as set out in the relevant ENA Engineering Recommendation G98 or G99 Standard Application Forms.

⊖—:

- Technical details of any Customer owned equipment that is likely to cause disturbance to the electricity supply (ie large motors, welders etc).
- Any payment that is required to be made in advance for the service to be provided.

†.——

- Minimum information applicable to Generation Applications of 1MW or above and Demand Applications of 5MVA or above:
  - Where the applicant is not the existing owner/leaseholder of the site, an appropriately signed agreement of Heads of Terms for the land indicated on the site plan (red line boundary).
  - Single line diagram of any existing and/or proposed electrical plant (for Demand Applications this is only required where there is customer owned equipment likely to cause disturbance).
  - A preliminary project timeline.
- Minimum information applicable to Generation Applications of 1MW or above:
  - Detailed engineering design plan for the entire site, clearly showing the location of key infrastructure and connection points.

5.19 The minimum information required for a SLC 15 quotation is:

- customer name and address (correspondence address), other contact details and preferred method of contact

**Guidance – ~~RIIO-ED2 Regulatory Instructions and Guidance: Annex G – Connections~~  
~~Connections v2.0~~RIIO-ED2 Regulatory Instructions and Guidance: Annex  
 G – Connections v2.1**

---

- site address/location
- site plan at an appropriate scale that indicates the site boundary (typically outlined with a red line), and where the Customer expects, or the proposed location of, a substation(s). For sites to be adopted by the DNO, the layout of buildings and roads shall be included. The plan should be free of unnecessary detail.
- the service required
- date when the Customer requires the connection(s) to be made
- ~~total maximum capacity (kVA) requirement (import and/or export)~~
- technical details of any electricity generator or storage device that is required to operate in parallel with the supply, as set out in the relevant ENA Engineering Recommendation G98 or G99 Standard Application Forms.
- technical details of any Customer owned equipment that is likely to cause disturbance to the electricity supply (i.e. large motors, welders etc).
- any payment that is required to be made in advance for the service to be provided.
- Minimum information applicable to Generation Applications of 1MW or above and Demand Applications of 5MVA or above:
  - Letter of authority where the applicant is acting as an agent of the Customer.
  - Where the applicant is not the existing owner/leaseholder of the site, an appropriately signed agreement of Heads of Terms for the land indicated on the site plan (red line boundary).
  - Single line diagram of any existing and/or proposed electrical plant (for Demand Applications this is only required where there is customer owned equipment likely to cause disturbance).
  - A preliminary project timeline.
- Minimum information applicable to Generation Applications of 1MW or above:
  - Detailed engineering design plan for the entire site, clearly showing the location of key infrastructure and connection points.

## Minimum information for unmetered standards

5.20 The minimum information required for an unmetered quotation is:

- customer name and address (correspondence address), other contact details and preferred method of contact
- location details
- plan at an appropriate scale to indicate the proposed location of each item of unmetered equipment
- letter of authority where the applicant is acting as an agent of the Customer
- date when the Customer requires the connection(s) to be made
- maximum capacity (watts) at each item of unmetered equipment to be connected
- description of each item of unmetered equipment to be connected (eg street light)
- technical details of any non-standard item of unmetered equipment to be connected
- any payment that is required to be made in advance for the service to be provided.

5.21 The minimum information required for an unmetered emergency response is:

- Location
- Local Authority
- address (with map if possible)
- equipment
- description of hazard
- contact details of person to provide updates to
- details of any staff on site and their contact details.

5.22 The minimum information required for an unmetered fault notification (including for high priority faults) is:

- customer identification reference
- Local Authority

**Guidance** – [RIIO-ED2 Regulatory Instructions and Guidance: Annex G – Connections v2.0](#)  
[RIIO-ED2 Regulatory Instructions and Guidance: Annex G – Connections v2.1](#)

---

- date issued by Customer
- customer contact name and details
- fault category
- accurate location of equipment, including:
  - address
  - postcode if possible
  - grid reference (Easting and Northings)
  - position description
  - asset number
  - map of area at scale 1:500 or 1:1250 as appropriate, with equipment highlighted.

## Additional information

- 5.23 During its work to provide the service the licensee may become aware that it requires additional information either regarding the Customer's proposals or in respect of the licensee's proposals. Where the licensee formally requests such additional information the clock will be paused and then resumed once the licensee has received the additional information.
- 5.24 The additional information required will be dependent on the circumstances of the connection and the minimum information requirements but may include the following:
- Information or agreement in respect of a proposed substation location.
  - Information or agreement in respect of proposed cable routes.
  - Information or agreement in respect of proposed metering points or location of items of unmetered equipment.
  - Further details regarding the capacity required to be provided at each metering point or regarding the nature of the electrical equipment to be used by the Customer.
  - Further details regarding the intended usage of the electrical equipment to be used by the Customer.
  - Further details regarding land ownership and/or land rights that is likely to be known by the Customer.



**Guidance** – ~~RIIO-ED2 Regulatory Instructions and Guidance: Annex G – Connections~~  
~~Connections v2.0~~[RIIO-ED2 Regulatory Instructions and Guidance: Annex G – Connections v2.1](#)

---

- Further details regarding land contamination.
- Confirmation of the design option to be reflected in the quotation where the Electricity Distributor has more than one practicable option under consideration.
- Site plan at an appropriate scale to indicate the site boundary.
- Letter of authority where the applicant is acting as an agent of the Customer.
- Technical details of any electricity generator that is required to operate in parallel with the supply.
- Technical details of any Customer owned equipment that is likely to cause disturbance to the electricity supply (ie large motors, welders etc).
- Any other information that the Electricity Distributor may reasonably request.

## 6. SLC 12 connections reporting

- 6.1 The purpose of collecting information related to Standard Licence Condition (SLC) 12 is to monitor compliance with the standards of performance specified in the licence.
- 6.2 SLC 12 of the electricity distribution licence requires the licensee to offer terms for an agreement for Use of System under paragraph 12.1 of the licence and for making a connection under section 16(1) of the Electricity Act 1989 (the “Act”). SLC 12 requires that the licensee must offer terms as soon as reasonably practical after the receipt of the request and not longer than sixty five Working Days, unless Ofgem consents otherwise.
- 6.3 The specific requirements are specified in SLC 12 and in sections 16 to 21 of the Act.
- 6.4 Licensees are required to report:
- the total number of quotations provided in the quarter
  - the number of quotations provided outside of timescales
  - the total number of quotations provided outside the timescales where SLC 12 applies
  - the maximum number of Working Days to provide a quotation.
- 6.5 This includes quotations issued for the provision of Non-Contestable connections. If the quotation was provided outside of the timescale, licensees should determine whether a quotation was made under section 16(1) of the Act.

**Guidance** – ~~RIIO-ED2 Regulatory Instructions and Guidance: Annex G – Connections~~  
~~Connections v2.0~~RIIO-ED2 Regulatory Instructions and Guidance: Annex  
G – Connections v2.1

---

## Send us your feedback

We are keen to receive your feedback about this guidance. We would also like to get your answers to these questions:

- Do you have any comments about the quality of this guidance?
- Do you have any comments about its tone and content?
- Was it easy to read and understand? Or could it have been better written?
- Do you have any further comments?

Please send your feedback to [stakeholders@ofgem.gov.uk](mailto:stakeholders@ofgem.gov.uk).

## 7. Appendix 1 - Overview of SLC 15 and 15A Standards of Performance

### Tables of Standards

- 7.1 The tables below provide a summary of the performance level (ie the timescale) and the compensation payment payable to a Customer for a failure to meet that performance level. The tables include payments applicable under Standard Licence Conditions (SLC) 15 and 15A of the electricity distribution licence. Payment amounts from Regulatory Year 2024/25 onward are derived by adjusting the values for Regulatory Year 2023/24 on or after 1 October 2023 in accordance with Regulation 17A of the Electricity (Connection Standards of Performance) Regulations 2015 as amended.
- 7.2 From Regulatory Year 2024/25 onward, new payment amounts will be calculated by adjusting the payment amounts for Regulatory Year 2023/24 on or after 1 October 2023 by the percentage change in the CPIH index published for the month of January preceding the Regulatory Year for which the adjustment is made in comparison to the CPIH index published for the month of January 2023, and then rounding the resulting figures to the nearest multiple of £5.
- 7.3 Using ECGS3B as an example, the payment amount from 1 October 2023 to 31 March 2024 is £160. If the CPIH index published for January 2024 is 3%, the indexed amount for Regulatory Year 2024/25 will be £164.8 ( $£160 \times 1.03$ ). The new payment amount for Regulatory Year 2024/25 should then be £165 by rounding £164.8 to the nearest multiple of £5.
- 7.4 Again, using ECGS3B as an example, if the CPIH index published for January 2025 is 4%, the indexed amount for Regulatory Year 2025/26 will be £171.392 ( $£160 \times 1.03 \times 1.04$ ). The new payment amount for Regulatory Year 2025/26 should then be £170 by rounding £171.392 to the nearest multiple of £5.

**Guidance** – [RIIO-ED2 Regulatory Instructions and Guidance: Annex G – Connections Connections v2.0](#)[RIIO-ED2 Regulatory Instructions and Guidance: Annex G – Connections v2.1](#)

- 7.5 For avoidance of doubt and as illustration of the rounding rules, an indexed amount of £162.49 should be rounded down to £160 and an indexed amount of £162.50 should be rounded up to £165. Similarly, an indexed amount of £167.49 should be rounded down to £165 and an indexed amount of £167.50 should be rounded up to £170.
- 7.6 Ofgem will update the payment amounts annually and publish the tables on its website at least 21 days before 1 April of the Regulatory Year for which the adjustment is made. This annual update of the payment amounts does not constitute a change in the RIGs. While the payment amounts in the Tables of Standards will be updated together with other changes in RIGs from time to time for the sake of clarity, such update is not required to give effects to the new payment amounts which are already published in Ofgem and DNOs' websites.
- 7.7 The date that service was actually provided (but did not meet the standards and exemptions did not apply) sets the reference period for the applicable payment amounts, except for standards ECGS11A, ECGS11B and ECGS12. For ECGS11A and ECGS11B, the date that a DNO confirmed inaccuracy or incompleteness of the quotation sets the applicable payment amounts. For ECGS12, the first Working Day after expiry of the prescribed period sets the applicable payment amounts.
- 7.8 ECGS1A (Regulation 4(2)) is used as an example to illustrate how the principle applies for a specific payment.

**Scenario 1**

Budget estimate dispatched before payment transition date

Regulation 4(2) - Scenario 1		14-Sep-23	15-Sep-23	16-Sep-23	17-Sep-23	18-Sep-23	19-Sep-23	20-Sep-23	21-Sep-23	22-Sep-23	23-Sep-23	24-Sep-23	25-Sep-23	26-Sep-23	27-Sep-23	28-Sep-23	29-Sep-23	30-Sep-23	01-Oct-23	02-Oct-23	03-Oct-23
		Thu	Fri	Sat	Sun	Mon	Tue	Wed	Thu	Fri	Sat	Sun	Mon	Tue	Wed	Thu	Fri	Sat	Sun	Mon	Tue
Application <b>AND</b> required information and payment received																					
Working day count		0	1			2	3	4	5	6			7	8	9	10	11			12	13
End of prescribed period																					
Budget estimate dispatched																					
Payment due (£)																	65			65	65

The budget estimate for the above example is dispatched on 29 September 2023, which is beyond the prescribed period but before the payment transition

**Guidance – RIIO-ED2 Regulatory Instructions and Guidance: Annex G – Connections**  
**Connections v2.0** **RIIO-ED2 Regulatory Instructions and Guidance: Annex**  
**G – Connections v2.1**

date of 1 October 2023. Thus, the payment amount that should apply on 29 September 2023 is £65.

## Scenario 2

Budget estimate dispatched after payment transition date

Regulation 4(2) - Scenario 2

	Thu	Fri	Sat	Sun	Mon	Tue	Wed	Thu	Fri	Sat	Sun	Mon	Tue	Wed	Thu	Fri	Sat	Sun	Mon	Tue	Wed	Thu	Fri	Sat	Sun	Mon	Tue
	14-Sep-23	15-Sep-23	16-Sep-23	17-Sep-23	18-Sep-23	19-Sep-23	20-Sep-23	21-Sep-23	22-Sep-23	23-Sep-23	24-Sep-23	25-Sep-23	26-Sep-23	27-Sep-23	28-Sep-23	29-Sep-23	30-Sep-23	01-Oct-23	02-Oct-23	03-Oct-23							
Application <b>AND</b> required information and payment received																											
Working day count	0	1			2	3	4	5	6			7	8	9	10	11				12	13						
End of prescribed period																											
Budget estimate dispatched																											
Payment due (£)																											

The budget estimate for the above example is dispatched on 2 October 2023, which is beyond the prescribed period and after the payment transition date of 1 October 2023. Thus, the payment amount that should apply on 2 October 2023 is £75 (even though the failure occurs before the payment transition date).

- 7.9 ECGS2A (Regulation 5(2)) is used as an example to illustrate how the principle applies for continuing payment.

## Scenario 1

Quotation dispatched before payment transition date

Regulation 5(2) - Scenario 1

	Wed	Thu	Fri	Sat	Sun	Mon	Tue	Wed	Thu	Fri	Sat	Sun	Mon	Tue	Wed	Thu	Fri	Sat	Sun	Mon	Tue	Wed
	20-Sep-23	21-Sep-23	22-Sep-23	23-Sep-23	24-Sep-23	25-Sep-23	26-Sep-23	27-Sep-23	28-Sep-23	29-Sep-23	30-Sep-23	01-Oct-23	02-Oct-23	03-Oct-23	04-Oct-23							
Application <b>AND</b> required information and payment received																						
Working day count	0	1	2			3	4	5	6	7			8	9	10							
End of prescribed period																						
Quotation dispatched																						
Payment due (£)									15	30										30	30	30

The quotation for the above example is dispatched on 29 September 2023, which is beyond the prescribed period but before the payment transition date of 1 October 2023. Thus, the payment amount that should apply on 29 September 2023 is £15 per working day.

## Scenario 2

Quotation dispatched after payment transition date

**Guidance – [RIIO-ED2 Regulatory Instructions and Guidance: Annex G – Connections v2.0](#)**  
**[RIIO-ED2 Regulatory Instructions and Guidance: Annex G – Connections v2.1](#)**

**Regulation 5(2) - Scenario 2**

	20-Sep-23	21-Sep-23	22-Sep-23	23-Sep-23	24-Sep-23	25-Sep-23	26-Sep-23	27-Sep-23	28-Sep-23	29-Sep-23	30-Sep-23	01-Oct-23	02-Oct-23	03-Oct-23	04-Oct-23
	Wed	Thu	Fri	Sat	Sun	Mon	Tue	Wed	Thu	Fri	Sat	Sun	Mon	Tue	Wed
Application <b>AND</b> required information and payment received															
Working day count	0	1	2			3	4	5	6	7			8	9	10
End of prescribed period															
Quotation dispatched															
Payment due (£)									20	40			60	80	80

The quotation for the above example is dispatched 3 October 2023, which is beyond the prescribed period and after the payment transition date of 1 October 2023. Thus, the payment amount that should apply on 3 October 2023 is £20 for each working day on or before the quotation is dispatched, even if some of the days are before the payment transition date.

## Consultation – RIIO-ED2 Regulatory Instructions and Guidance – Annex G Connections

### Tables of SLC 15A standards

#### SLC15A – Metered Quotation Standards, Payment to Customer £

Reporting code (ECGS number <sup>4</sup> )	Service	Performance Level	2023/24 1 Apr – 30 Sep	2023/24 1 Oct – 31 Mar	2024/25	2025/26	2026/27	2027/28	Comment	Reg. Ref. <sup>5</sup>
1A	Provision of budget estimate <1MVA	Within 10 Working Days	65	75	80TB €*	TBC*	TBC*	TBC*	one off payment	4(2)
1B	Provision of budget estimate >1MVA	Within 20 Working Days	65	75	80TB €*	TBC*	TBC*	TBC*	one off payment	4(3)
2A	Provision of a quotation for a single LV single phase service connection	Within 5 Working Days	15	20	20TB €*	TBC*	TBC*	TBC*	for each Working Day after the end of the prescribed period up to and including the day on which the quotation is dispatched	5(2)
2B	Provision of a quotation for small LV projects: <ul style="list-style-type: none"> <li>2-4 LV single phase domestic services or</li> <li>for connections to 1-4 LV single phase domestic premises involving an extension to the LV network or</li> </ul>	Within 15 Working Days	15	20	20TB €*	TBC*	TBC*	TBC*	for each Working Day after the end of the prescribed period up to and including the day on which the quotation is dispatched	5(3)

<sup>4</sup> ECGS number means Electricity Connections Guaranteed Standards number.

<sup>5</sup> Reg. Ref. means reference to the specific regulation as listed under the Electricity (Connection Standards of Performance) Regulations 2015 as amended.



**Guidance – ~~RHO-ED2 Regulatory Instructions and Guidance: Annex G – Connections~~ Connections v2.0**  
**~~RHO-ED2 Regulatory Instructions and Guidance: Annex G – Connections v2.1~~**

	<ul style="list-style-type: none"> <li>a single two or three phase whole current metered connection (not requiring an extension to LV network)</li> </ul>									
<b>3A</b>	Provision of any other LV demand quotation	Within 25 Working Days	65	75	<del>80</del> <sup>TB</sup> €*	TBC*	TBC*	TBC*	for each Working Day after the end of the prescribed period up to and including the day on which the quotation is dispatched	6(2)
<b>3B</b>	Provision of an HV demand quotation	Within 35 Working Days	135	160	<del>165</del> <sup>TB</sup> €*	TBC*	TBC*	TBC*	for each Working Day after the end of the prescribed period up to and including the day on which the quotation is dispatched	6(3)
<b>3C</b>	Provision of a EHV demand quotation	Within 65 Working Days	200	235	<del>TBC</del> <sup>*2</sup> 45	TBC*	TBC*	TBC*	for each Working Day after the end of the prescribed period up to and including the day on which the quotation is dispatched	6(4)

\* Payment values applicable from 1 April 202~~5~~<sup>4</sup> onwards will be published by Ofgem in March of the relevant year. These values will subsequently be updated at the next suitable point in time and this does not have to be before the values are effective.

**Guidance – ~~RHO-ED2 Regulatory Instructions and Guidance: Annex G – Connections~~ – Connections v2.0** **RHO-ED2 Regulatory Instructions and Guidance: Annex G – Connections v2.1**

SLC15A - Other Metered Standards, Payment to Customer £

Reporting code (ECGS number)	Service	Performance Level	2023/24 1 Apr – 30 Sep	2023/24 1 Oct – 31 Mar	2024/25	2025/26	2026/27	2027/28	Comment	Reg. Ref.
4A	Contact Customer (post acceptance) about scheduling <5 LV service connections covered by 2A & 2B	Within 7 Working Days	15	20	<del>TBC*</del> 20	TBC*	TBC*	TBC*	for each Working Day after the end of the prescribed period up to and including the day on which contact occurs	8(2)
4B	Contact Customer (post acceptance) about scheduling other LV demand connections	Within 7 Working Days	65	75	<del>TBC*</del> 80	TBC*	TBC*	TBC*	for each Working Day after the end of the prescribed period up to and including the day on which contact occurs	9(2)
4C	Contact Customer (post acceptance) about	Within 10 Working Days	135	160	<del>TBC*</del> 165	TBC*	TBC*	TBC*	for each Working Day after the end of the prescribed	9(3)

**Guidance – ~~RIO-ED2 Regulatory Instructions and Guidance: Annex G – Connections~~ – Connections v2.0**  
**~~RIO-ED2 Regulatory Instructions and Guidance: Annex G – Connections v2.1~~**

	scheduling HV demand connections								period up to and including the day on which contact occurs	
4D	Contact Customer (post acceptance) about scheduling EHV demand connections	Within 15 Working Days	200	235	<del>TBC*</del> 245	TBC*	TBC*	TBC*	for each Working Day after the end of the prescribed period up to and including the day on which contact occurs	9(4)
5	Commence LV, HV & EHV demand works on Customer's site	In timescale agreed with the Customer	25	30	<del>TBC*</del> 30	TBC*	TBC*	TBC*	for each Working Day after the agreed date up to and including the day on which the works are commenced	9(5)
6A	Complete service connection works	In timescale agreed with the Customer	35	40	<del>TBC*</del> 40	TBC*	TBC*	TBC*	for each Working Day after the agreed date up to and including	8(3)

**Guidance – ~~RIO-ED2 Regulatory Instructions and Guidance: Annex G – Connections~~–Connections v2.0**  
**~~RIO-ED2 Regulatory Instructions and Guidance: Annex G – Connections v2.1~~**

									the day on which the works are completed	
6B	Complete LV works (including phased works)	In timescale agreed with the Customer	135	160	<del>TBC*</del> 165	TBC*	TBC*	TBC*	for each Working Day after the agreed date up to and including the day on which the works are completed	9(6)
6C	Complete HV works (including phased works)	In timescale agreed with the Customer	200	235	<del>TBC*</del> 245	TBC*	TBC*	TBC*	for each Working Day after the agreed date up to and including the day on which the works are completed	9(7)
6D	Complete EHV works (including phased works)	In timescale agreed with the Customer	270	315	<del>TBC*</del> 330	TBC*	TBC*	TBC*	for each Working Day after the agreed date up to and including the day on which the works are completed	9(8)

**Guidance – ~~RIO-ED2 Regulatory Instructions and Guidance: Annex G – Connections~~ ~~Connections v2.0~~ ~~RIO-ED2 Regulatory Instructions and Guidance: Annex G – Connections v2.1~~**

7A	Complete LV energisation works (including phased works)	In timescale agreed with the Customer	135	160	<del>TBC*</del> 165	TBC*	TBC*	TBC*	for each Working Day after the agreed date up to and including the day on which energisation occurs	9(9)
7B	Complete HV energisation works (including phased works)	In timescale agreed with the Customer	200	235	<del>TBC*</del> 245	TBC*	TBC*	TBC*	for each Working Day after the agreed date up to and including the day on which energisation occurs	9(10)
7C	Complete EHV energisation works (including phased works)	In timescale agreed with the Customer	270	315	<del>TBC*</del> 330	TBC*	TBC*	TBC*	for each Working Day after the agreed date up to and including the day on which energisation occurs	9(11)

\* Payment values applicable from 1 April 2024 onwards will be published by Ofgem in March of the relevant year. These values will subsequently be updated at the next suitable point in time and this does not have to be before the values are effective.

**Guidance** – ~~RIIO-ED2 Regulatory Instructions and Guidance: Annex G – Connections – Connections v2.0~~ [RIIO-ED2 Regulatory Instructions and Guidance: Annex G – Connections v2.1](#)

---

**Guidance – ~~RIO-ED2 Regulatory Instructions and Guidance: Annex G – Connections~~–Connections v2.0**  
**~~RIO-ED2 Regulatory Instructions and Guidance: Annex G – Connections v2.1~~**

SLC 15A - Unmetered Standards, Payment to Customer £

Reporting code (ECGS number)	Service	Performance Level	2023/24 1 Apr – 30 Sep	2023/24 1 Oct – 31 Mar	2024/25	2025/26	2026/27	2027/28	Comment	Reg. Ref.
8A	Emergency Fault Repair response	Attend site in 2 hours	65	75	<del>TBC*80</del>	TBC*	TBC*	TBC*	one off payment	10(2)
8B	High Priority Fault Repair – Traffic Light Controlled	2 calendar days	15	20	<del>TBC*20</del>	TBC*	TBC*	TBC*	for each Working Day after the end of the prescribed period up to and including the day on which the fault rectification works are completed	10(3)
8C	High Priority Fault Repair – non Traffic Light Controlled	Within 10 Working Days	15	20	<del>TBC*20</del>	TBC*	TBC*	TBC*	for each Working Day after the end of the prescribed period up to and including the day on which the fault rectification works are completed	10(4)

**Guidance –** ~~RIIO-ED2 Regulatory Instructions and Guidance: Annex G – Connections~~ ~~Connections v2.0~~ ~~RIIO-ED2 Regulatory Instructions and Guidance: Annex G – Connections v2.1~~

8D	Multiple unit fault repair	Within 20 Working Days	15	20	<del>TBC*</del> 20	TBC*	TBC*	TBC*	for each Working Day after the end of the prescribed period up to and including the day on which the fault rectification works are completed	10(5)
8E	Single unit fault repair	Within 25 Working Days	15	20	<del>TBC*</del> 20	TBC*	TBC*	TBC*	for each Working Day after the end of the prescribed period up to and including the day on which the fault rectification works are completed	10(6)
9	Provision of a quotation – New Works order (1-100 units)	Within 25 Working Days	15	20	<del>TBC*</del> 20	TBC*	TBC*	TBC*	for each Working Day after the end of the prescribed period up to and including the day the	11(2)



**Guidance – ~~RIO-ED2 Regulatory Instructions and Guidance: Annex G – Connections~~–Connections v2.0**  
**~~RIO-ED2 Regulatory Instructions and Guidance: Annex G – Connections v2.1~~**

									quotation is dispatched	
10A	New works order - completion of works on a new site	Commence and complete in timescales agreed with the customer	15	20	<del>TBC*20</del>	TBC*	TBC*	TBC*	for each Working Day after the end of the agreed date up to and including the day the works are completed	12(2)
10B	New works order - completion of works on adopted highways	Within 35 Working Days	15	20	<del>TBC*20</del>	TBC*	TBC*	TBC*	for each Working Day after the end of the agreed date up to and including the day the works are completed	12(3)

\* Payment values applicable from 1 April 2024 onwards will be published by Ofgem in March of the relevant year. These values will subsequently be updated at the next suitable point in time and this does not have to be before the values are effective.

**Guidance –** ~~RIO-ED2 Regulatory Instructions and Guidance: Annex G – Connections~~ ~~Connections v2.0~~ ~~RIO-ED2 Regulatory Instructions and Guidance: Annex G – Connections v2.1~~

SLC 15A - Connections standards not included in the 90% performance metric, Payment to Customer £

Reporting code (ECGS number)			2023/24 1 Apr – 30 Sep	2023/24 1 Oct – 31 Mar	2024/25	2025/26	2026/27	2027/28	Comment	Reg. Ref.
11A	Quotation accuracy review scheme challenge single LV single phase service connection (aligns to 2A)	Not applicable	335	395	<del>TBC*</del> 410	TBC*	TBC*	TBC*	one off payment	7(3)
11B	Quotation accuracy review scheme challenge for small LV projects (aligns to 2B)	Not applicable	670	785	<del>TBC*</del> 820	TBC*	TBC*	TBC*	one off payment	7(4)
12	Where an Electricity Distributor fails to make a payment	Within 10 Working Days	65	75	<del>TBC*</del> 80	TBC*	TBC*	TBC*	one off payment	14(1)

**Guidance – ~~RIO-ED2 Regulatory Instructions and Guidance: Annex G – Connections – Connections v2.0~~ [RIO-ED2 Regulatory Instructions and Guidance: Annex G – Connections v2.1](#)**

---

	under the regulations									
--	-----------------------	--	--	--	--	--	--	--	--	--

\* Payment values applicable from 1 April 2024 onwards will be published by Ofgem in March of the relevant year. These values will subsequently be updated at the next suitable point in time and this does not have to be before the values are effective.

**Guidance –** [RHO-ED2 Regulatory Instructions and Guidance: Annex G – Connections v2.0](#)~~RHO-ED2 Regulatory Instructions and Guidance: Annex G – Connections v2.1~~

## Tables of DG standards

DG - Metered quotations, Voluntary Payment to Customer £

Reporting code (ECDGS number <sup>6</sup> )	Service	Performance Level	2023/24 1 Apr – 30 Sep	2023/24 1 Oct – 31 Mar	2024/25	2025/26	2026/27	2027/28	Comment	Cond. Ref. <sup>7</sup>
1A	Provision of Budget Estimate <1MVA	Within 10 Working Days	65	75	<del>TBC*</del> <a href="#">80</a>	TBC*	TBC*	TBC*	one off payment	2(2)
1B	Provision of Budget Estimate >1MVA	Within 20 Working Days	65	75	<del>TBC*</del> <a href="#">80</a>	TBC*	TBC*	TBC*	one off payment	2(3)
3A	Provision of an LV generation Quotation	Within 45 Working Days	65	75	<del>TBC*</del> <a href="#">80</a>	TBC*	TBC*	TBC*	for each Working Day after the end of the prescribed period up to and including the day on which the Quotation is dispatched	3(2)

<sup>6</sup> ECDGS number is the Electricity Connections Distributed Generation Standards number which is associated with their corresponding conditions of the DG Standards Direction.

<sup>7</sup> Cond. Ref. means Condition Reference and is the reference to the specific condition as listed under the DG Standards Direction.

**Guidance –** ~~RIIO-ED2 Regulatory Instructions and Guidance: Annex G – Connections – Connections v2.0~~ [RIIO-ED2 Regulatory Instructions and Guidance: Annex G – Connections v2.1](#)

3B	Provision of an HV generation Quotation	Within 65 Working Days	135	160	<del>TBC*</del> <a href="#">165</a>	TBC*	TBC*	TBC*	for each Working Day after the end of the prescribed period up to and including the day on which the Quotation is dispatched	3(3)
3C	Provision of an EHV generation Quotation	Within 65 Working Days	200	235	<del>TBC*</del> <a href="#">245</a>	TBC*	TBC*	TBC*	for each Working Day after the end of the prescribed period up to and including the day on which the Quotation is dispatched	3(4)

\* Payment values applicable from 1 April 2024 onwards will be published by Ofgem in March of the relevant year. These values will subsequently be updated at the next suitable point in time and this does not have to be before the values are effective.

**Guidance – ~~RIO-ED2 Regulatory Instructions and Guidance: Annex G – Connections~~–Connections v2.0**  
**~~RIO-ED2 Regulatory Instructions and Guidance: Annex G – Connections v2.1~~**

DG - Other metered, Voluntary Payment to Customer £

Reporting code (ECDGS number)	Service	Performance Level	2023/24 1 Apr – 30 Sep	2023/24 1 Oct – 31 Mar	2024/25	2025/26	2026/27	2027/28	Comment	Cond. Ref.
4B	Contact Customer (post acceptance) about scheduling LV Generation Connections	Within 7 Working Days	65	75	<del>TBC*</del> 80	TBC*	TBC*	TBC*	for each Working Day after the end of the prescribed period up to and including the day on which contact occurs	4(2)
4C	Contact Customer (post acceptance) about scheduling HV Generation Connections	Within 10 Working Days	135	160	<del>TBC*</del> 165	TBC*	TBC*	TBC*	for each Working Day after the end of the prescribed period up to and including the day on which contact occurs	4(3)
4D	Contact Customer (post acceptance) about scheduling EHV	Within 15 Working Days	200	235	<del>TBC*</del> 245	TBC*	TBC*	TBC*	for each Working Day after the end of the prescribed period up to and including the day on	4(4)

**Guidance – ~~RIO-ED2 Regulatory Instructions and Guidance: Annex G – Connections~~ Connections v2.0**  
**~~RIO-ED2 Regulatory Instructions and Guidance: Annex G – Connections v2.1~~**

	Generation Connections								which contact occurs	
5	Commence LV, HV & EHV generation works on Customer's site	In timescale agreed with the Customer	25	30	<del>TBC*</del> <u>30</u>	TBC*	TBC*	TBC*	for each Working Day after the agreed date up to and including the day on which the works are commenced	4(5)
6B	Complete LV works (including phased works)	In timescale agreed with the Customer	135	160	<del>TBC*</del> <u>165</u>	TBC*	TBC*	TBC*	for each Working Day after the agreed date up to and including the day on which the works are completed	4(6)
6C	Complete HV works (including phased works)	In timescale agreed with the Customer	200	235	<del>TBC*</del> <u>235</u>	TBC*	TBC*	TBC*	for each Working Day after the agreed date up to and including the day on which the works are completed	4(7)
6D	Complete EHV works (including phased works)	In timescale agreed with the Customer	270	315	<del>TBC*</del> <u>330</u>	TBC*	TBC*	TBC*	for each Working Day after the agreed date up to and including the	4(8)

**Guidance – ~~RIO-ED2 Regulatory Instructions and Guidance: Annex G – Connections~~ ~~Connections v2.0~~ ~~RIO-ED2 Regulatory Instructions and Guidance: Annex G – Connections v2.1~~**

									day on which the works are completed	
7A	Complete LV Energisation works (including phased works)	In timescale agreed with the Customer	135	160	<del>TBC*</del> <u>165</u>	TBC*	TBC*	TBC*	for each Working Day after the agreed date up to and including the day on which Energisation occurs	4(9)
7B	Complete HV Energisation works (including phased works)	In timescale agreed with the Customer	200	235	<del>TBC*</del> <u>245</u>	TBC*	TBC*	TBC*	for each Working Day after the agreed date up to and including the day on which Energisation occurs	4(10)
7C	Complete EHV Energisation works (including phased works)	In timescale agreed with the Customer	270	315	<del>TBC*</del> <u>330</u>	TBC*	TBC*	TBC*	for each Working Day after the agreed date up to and including the day on which Energisation occurs	4(11)

\* Payment values applicable from 1 April 2024 onwards will be published by Ofgem in March of the relevant year. These values will subsequently be updated at the next suitable point in time and this does not have to be before the values are effective.



**Guidance – ~~RIO-ED2 Regulatory Instructions and Guidance: Annex G – Connections~~–Connections v2.0**  
**~~RIO-ED2 Regulatory Instructions and Guidance: Annex G – Connections v2.1~~**

Table of SLC 15 standards, Voluntary Payment to Customer £

Reporting code	Service	Standard	2023/24 1 Apr – 30 Sep	2023/24 1 Oct – 31 Mar	2024/25	2025/26	2026/27	2027/28	Comment
1a	Provide a quotation for low voltage demand. For a new demand connection to the licensee's distribution system where the highest voltage of the assets at the point of connection and any associated works is not more than one kilovolt	Within 15 Working Days of receiving the request	65	75	<del>TBC*</del> 80	TBC*	TBC*	TBC*	for each Working Day after the end of the prescribed period up to and including the day on which the quotation is dispatched
1b	Provide a quotation for low voltage generation. For a new generation connection to the licensee's distribution system where the highest voltage of the	Within 30 Working Days of receiving the request	65	75	<del>TBC*</del> 80	TBC*	TBC*	TBC*	for each Working Day after the end of the prescribed period up to and including the day on which the quotation is dispatched

**Guidance – ~~RIO-ED2 Regulatory Instructions and Guidance: Annex G – Connections~~ Connections v2.0**  
**~~RIO-ED2 Regulatory Instructions and Guidance: Annex G – Connections v2.1~~**

	assets at the point of connection and any associated works is not more than kilovolt								
1c	Provide a quotation for high voltage demand. For a new demand connection to the licensee's distribution system where the highest voltage of the assets at the point of connection and any associated work is more than one kilovolt but not more than 22 kilovolts	Within 20 Working Days of receiving the request	<b>135</b>	<b>160</b>	<del>TBC*</del> 165	TBC*	TBC*	TBC*	for each Working Day after the end of the prescribed period up to and including the day on which the quotation is dispatched
1d	Provide a quotation for high voltage generation. For a new generation connection to the licensee's	Within 50 Working Days of receiving the request	<b>135</b>	<b>160</b>	<del>TBC*</del> 165	TBC*	TBC*	TBC*	for each Working Day after the end of the prescribed period up to and including the day on which the quotation is dispatched

**Guidance –** ~~RIO-ED2 Regulatory Instructions and Guidance: Annex G – Connections~~ ~~Connections v2.0~~ ~~RIO-ED2 Regulatory Instructions and Guidance: Annex G – Connections v2.1~~

	distribution system where the highest voltage of the assets at the point of connection and any associated works is more than one kilovolt but not more than 22 kilovolts								
1e	provide a quotation for extra high voltage demand. For a new demand connection to the licensee's distribution system where the highest voltage of the assets at the point of connection and associated works is more than 22 kilovolts but not more than 72 kilovolts	Within 50 Working Days of receiving the request	<b>200</b>	<b>235</b>	<del>TBC*</del> 245	TBC*	TBC*	TBC*	for each Working Day after the end of the prescribed period up to and including the day on which the quotation is dispatched

**Guidance – ~~RIO-ED2 Regulatory Instructions and Guidance: Annex G – Connections~~ Connections v2.0**  
**Instructions and Guidance: Annex G – Connections v2.1**

1f	Provide a quotation for other connections. For a new demand or generation connections to the licensee's distribution system that is not included within the preceding sub-paragraphs	Within 65 Working Days of receiving the request	<b>135</b>	<b>160</b>	<del>TBC*</del> 165	TBC*	TBC*	TBC*	for each Working Day after the end of the prescribed period up to and including the day on which the quotation is dispatched
2a	Provide information on point of connection. Provision of technical information necessary to enable the applicant to identify the proposed location and characteristics of the point of connection of the premises to the licensee's distribution system, where	Within 30 Working Days of receiving the request	<b>65</b>	<b>75</b>	<del>TBC*</del> 80	TBC*	TBC*	TBC*	for each Working Day after the end of the prescribed period up to and including the day on which the information is provided

**Guidance –** ~~RIO-ED2 Regulatory Instructions and Guidance: Annex G – Connections~~ ~~Connections v2.0~~ **RIO-ED2 Regulatory Instructions and Guidance: Annex G – Connections v2.1**

	the highest voltage of the assets at that point and any associated works is more than 22 kilovolts but not more than 72 kilovolts								
2b	Design submissions for low and high voltage connections. Provide in response to a design submitted by the applicant for the licensee's approval, outlining a new proposal for connecting premises to the licensee's distribution system, provide a written approval of the proposed design or a written rejection stating the	Within 10 Working Days of receiving the proposed design (unless any part of it would require or directly affect the use of extra high voltage assets)	<b>65</b> <b>135</b>	<b>75</b> <b>160</b>	<del>TBC*</del> <a href="#">80</a> <a href="#">165</a>	TBC*	TBC*	TBC*	low voltage high voltage for each Working Day after the end of the prescribed period up to and including the day on which the response is provided

**Guidance – ~~RIO-ED2 Regulatory Instructions and Guidance: Annex G – Connections~~ Connections v2.0**  
**~~RIO-ED2 Regulatory Instructions and Guidance: Annex G – Connections v2.1~~**

	reasons for the rejection								
2c	Design submissions for extra high voltage and other connections. Provide in response to a design submitted by the applicant for the licensee's approval, outlining a new proposal for connecting premises to the licensee's distribution system, provide a written approval of the proposed design, or a written rejection stating the reasons for the rejection.	Within 20 Working Days of receiving the proposed design	<b>200</b>	<b>235</b>	<del>TBC*</del> <a href="#">245</a>	TBC*	TBC*	TBC*	for each Working Day after the end of the prescribed period up to and including the day on which the response is provided
3a	subject to all conditions precedent being met (for all of 3a-e):	Within 10 Working Days of receiving the	<b>135</b>	<b>160</b>	<del>TBC*</del> <a href="#">165</a>	TBC*	TBC*	TBC*	for each Working Day after the end of the prescribed period up to and including the day on which the final works is completed

**Guidance – ~~RHO-ED2 Regulatory Instructions and Guidance: Annex G – Connections~~–Connections v2.0**  
**~~RHO-ED2 Regulatory Instructions and Guidance: Annex G – Connections v2.1~~**

	Final works and phased energisation low voltage connections. Complete the final works for a low voltage connection.	request or on a later date that has been requested by the applicant and agreed by the licensee							
3b	Final works and phased energisation high voltage connections. Complete the final works for a high voltage connection.	Within 20 Working Days of receiving the request or on a later date that has been requested by the applicant and agreed by the licensee	<b>200</b>	<b>235</b>	<del>TBC</del> * <a href="#">245</a>	TBC*	TBC*	TBC*	for each Working Day after the end of the prescribed period up to and including the day on which the final works is completed
3c	Final works and phased energisation extra high voltage connections. Complete the final works for an extra high	Within 20 Working Days of receiving the request or on a later date that has been requested	<b>270</b>	<b>315</b>	<del>TBC</del> * <a href="#">330</a>	TBC*	TBC*	TBC*	for each Working Day after the end of the prescribed period up to and including the day on which the final works is completed

**Guidance – ~~RIO-ED2 Regulatory Instructions and Guidance: Annex G – Connections~~–Connections v2.0**  
**~~RIO-ED2 Regulatory Instructions and Guidance: Annex G – Connections v2.1~~**

	voltage connection.	by the applicant and agreed by the licensee							
3d	Final works and phased energisation low voltage energisation. Complete the works required for a low voltage phased energisation.	Within five Working Days of receiving the request or on a later date that has been requested by the applicant and agreed by the licensee	<b>135</b>	<b>160</b>	<del>TBC*</del> <a href="#">165</a>	TBC*	TBC*	TBC*	for each Working Day after the end of the prescribed period up to and including the day on which the phased energisation is completed
3e	Final works and phased energisation high voltage energisation. Complete the works required for a high voltage phased energisation	Within 10 Working Days of receiving the request or on a later date that has been requested by the applicant and agreed by the licensee	<b>200</b>	<b>235</b>	<del>TBC*</del> <a href="#">245</a>	TBC*	TBC*	TBC*	for each Working Day after the end of the prescribed period up to and including the day on which the phased energisation is completed



**Guidance** – ~~RIIO-ED2 Regulatory Instructions and Guidance: Annex G – Connections – Connections v2.0~~ [RIIO-ED2 Regulatory Instructions and Guidance: Annex G – Connections v2.1](#)

---

\* Payment values applicable from 1 April 2024 onwards will be published by Ofgem in March of the relevant year. These values will subsequently be updated at the next suitable point in time and this does not have to be before the values are effective.

**Guidance** ~~RHO-ED2 Regulatory Instructions and Guidance: Annex G – Connections v2.0~~  
[RHO-ED2 Regulatory Instructions and Guidance: Annex G – Connections v2.1](#)

## 8. Appendix 2 - Overview of metered and distributed generation connection standards

### Budget estimates

- 8.1 Provision of a Budget Estimate, in response to a request from a Customer, requires an Electricity Distributor to provide an indication of the likely costs that a Customer would expect to incur in obtaining a connection to the site. This must outline any assumptions made and any aspects that are likely to significantly change the level of charges, such as changing availability of capacity (see ‘conditions precedent’).
- 8.2 Budget estimates will be carried out on the basis of a desktop exercise and will not involve a site visit, any analysis of the wider network or any technical studies. Budget estimates will be provided on a reasonable endeavours basis but may differ from the amount in any subsequent formal quotation. Where following the issue of a budget estimate spare network capacity is allocated to others the amount in any subsequent formal quotation may differ significantly. A budget estimate will indicate whether any Associated Works are likely to be required and the likely costs.
- 8.3 Electricity Distributors may agree to carry out alternative arrangements with Customers, such as feasibility studies, or more detailed cost estimates. These will be by agreement between the two parties and are outside these standards.
- 8.4 Relevant standards for budget estimates are ECGS1A, ECGS1B and ECDGS1A and ECDGS1B. There are no specific exemptions that apply to these Standards. General exemptions may apply, see chapter 4.

### Quotations

- 8.5 Provision of a Quotation requires an Electricity Distributor to make a formal offer for connection on the basis of a Section 16 quotation. A Section 16 quotation

refers to the obligations set out under the Electricity Act 1989. The quotation will be supplemented by a breakdown of costs, and any relevant supporting information, drawings and diagrams. Quotations must be capable of being cross referenced with the charging methodology statement in order that Customers can compare quotations against these indicative charges.

- 8.6 The timescales for issuing quotations are determined based upon the voltage of the point of connection, the type of connection (whether demand or generation) and the voltage of any associated works (including diversionary works and upstream reinforcement). Diversions and other works apply where they are needed to facilitate a new connection under these standards.
- 8.7 Relevant standards are ECGS2A, ECGS2B, ECGS3A-3C and ECDGS3A-3C. There are no specific exemptions for these Standards. Please refer to chapter 3 for instances of where a demand application may include generation and chapter 4 for details of general Exemptions.
- 8.8 The timeframes for quotes are fixed and apply unless the Customer requests or agrees to a revised timeframe. If the Customer does request or agrees to a revised timeframe - the Distributor does not fail and the Customer waives the right to compensation and the quotation would be reported as an exemption.
- 8.9 If a Distributor approaches a Customer to discuss a revised timeframe and the Customer refuses, then the Distributor must produce the quote in the required timeframe, if it fails this is recorded as a failure against the standards and would be subject to compensation and ongoing payments until the quote is provided.

## **Application of quotation standards for abnormal loads**

- 8.10 Where the Distributor believes that the LV load to be connected could reasonably be expected to cause disruption to other Customers (“abnormal loads”), then the application would be treated as an ECGS3A any ‘other’ LV Demand.

**Guidance** – ~~RIIO-ED2 Regulatory Instructions and Guidance: Annex G – Connections~~  
~~Connections v2.0~~ RIIO-ED2 Regulatory Instructions and Guidance: Annex  
G – Connections v2.1

---

- 8.11 Connections schemes which involve abnormal loads such as the use of motors, welding equipment or generators generally require further in-depth assessments by Distributors including calculations that will involve identifying the upstream network components, fault levels etc to ensure that such loads do not cause the quality of supply to existing Customers to be affected.
- 8.12 Where new connection applications that relate to single services or small project demand applications but involve abnormal loads, then the quotation timeframe that applies is that of an 'other' LV demand quotation and is 25 Working Days rather than 5 or 15 Working Days respectively.

## **SLC 15 POC information**

- 8.13 Where a SLC 15 quotation is requested and is classified as being "extra high voltage" licensees have an obligation to provide the Customer with POC information within 30 Working Days. SLC 15 requires that Licensees should use reasonable endeavours to meet this timescale in every case.
- 8.14 Licensees' obligations in providing POC information are subject to any relevant exemptions and the Customer providing any necessary minimum information.
- 8.15 Where a quotation is requested and is categorised within the "other connections" standard then the licensee should attempt, wherever possible, to inform the Customer of the classification as soon as possible. Ofgem expects that in most cases the licensee will be able to do so within 30 Working Days.

## 9. Appendix 3 - Overview of other metered and other metered distributed generation connection standards

- 9.1 This chapter provides additional guidance on the application of Other metered and Other metered DG standards and includes examples to ensure consistent treatment across Distributors. Please see chapter 4 and 5 for details of exemptions, extensions of time and minimum and additional information needs.

### Customer contact

- 9.2 Post acceptance scheduling requires an Electricity Distributor to seek to make contact with the Customer, after receipt of their quotation acceptance and any relevant payments, as detailed in the quotation, with a view to commencing the process of agreeing dates when the on-site project works will be started and completed.
- 9.3 Whilst timescales have been set by which the Electricity Distributor is required to make (or have attempted to make) contact with the Customer, there will be situations whereby either party may not be in a position to agree dates. In these situations discussions as to when both parties would be in a position to have a meaningful discussion on dates would be discussed and agreed. The standards would however be met if the initial contact was made within the prescribed timescales.
- 9.4 Where a standard specifies actions to be taken by an agreed date, the Electricity Distributor should take all reasonable steps to agree a date with the Customer or his representative. In the event that a date cannot be agreed, the Electricity Distributor does not fail the standard. The Electricity Distributor should publicise its complaint handling procedure to ensure that the Customer is able to address the matter adequately with the Electricity Distributor prior to a formal referral to the Ombudsman or Authority.

**Guidance** – [RIIO-ED2 Regulatory Instructions and Guidance: Annex G – Connections v2.0](#)  
[RIIO-ED2 Regulatory Instructions and Guidance: Annex G – Connections v2.1](#)

---

- 9.5 Where an Electricity Distributor is required to make contact with a Customer, there only needs to be one attempt made by a telephone call. Where the Electricity Distributor is unable to make contact through this call and has left a message (where able to do so), an e-mail or letter should be sent, based on Customer's preferred method, if known.
- 9.6 Relevant standards are ECGS4A-4D and ECDGS4B-4D. There are no specific exemptions that apply to these Standards. Refer to chapter 4 for general exemptions.

## Design Submissions - SLC 15

- 9.7 Where a Customer submits a design for the licensee's approval then the licensee should provide a written response to that design within 10 Working Days for low voltage and high voltage connections and within 20 Working Days for extra high voltage and other connections. The written response should either approve the design or provide a reason or reasons for rejection.
- 9.8 The licensee is obliged to use reasonable endeavours to meet the relevant timescales in every case. Further, the licensee is required to meet the prescribed timescale in at least 90% of all cases as measured over the Regulatory Year.
- 9.9 The licensee's obligations are subject to any relevant exemptions.
- 9.10 The classification of a design submission is determined based on the highest voltage of the POC and any associated Non-Contestable works.

## Commencement of work

- 9.11 Commencement of works means the date by which the Electricity Distributor agrees to commence works on site. This regulation is limited to works which are carried out at or in relation to the premises and also includes any phase of works which may be conducted at or in relation to the premises.

**Guidance** – ~~RIIO-ED2 Regulatory Instructions and Guidance: Annex G – Connections~~  
~~Connections v2.0~~ [RIIO-ED2 Regulatory Instructions and Guidance: Annex G – Connections v2.1](#)

---

- 9.12 Relevant Standard is ECGS5 and ECDGS5. Relevant exemptions are 15(2) and 15(3) (Condition 5(2) and 5(3) in the DG Standards Direction) and 15(7) and 15(8) (Condition 5(7) and 5(8) in the DG Standards Direction). See also relevant Extensions of Time as they may apply, chapter 5.

## Completion of works

- 9.13 Completion of works means the date by which the Electricity Distributor agrees that the connection works will be completed, such that the connection can be energised. Completion of works relates to completion of the electrical works only and does not apply for example to reinstatement. However it is anticipated that Electricity Distributors will complete other works within a reasonable timescale by agreement.
- 9.14 Phased completion and energisation, where applicable, relates to phased developments as set out in the Electricity Distributor's Quotation Offer.
- 9.15 Relevant Standards are ECGS6A-6D and ECDGS6B-6D. Relevant exemptions are 15(2) and 15(3) (Condition 5(2) and 5(3) in the DG Standards Direction) and 15(7) and 15(8) (Condition 5(7) and 5(8) in the DG Standards Direction). See also relevant Extensions of Time as they may apply, chapter 5.

## Energisation of works

- 9.16 Energisation means the energisation of a metering point in order to provide a supply of electricity to an end user Customer.
- 9.17 Energisation is carried out by the insertion of a fuse or operation of a switch that will allow an electrical current to flow from an Electricity Distributor's distribution system to the Customer's installation. It is only when the action in question is required to be carried out by the Electricity Distributor and is subject to standard industry requirements.
- 9.18 Energisation is normally carried out by the appointed meter operator and will only be carried out by the Electricity Distributor in circumstances where the

**Guidance** – [RIIO-ED2 Regulatory Instructions and Guidance: Annex G – Connections v2.0](#)  
[RIIO-ED2 Regulatory Instructions and Guidance: Annex G – Connections v2.1](#)

---

meter operator is not authorised to do so (ie where the metering point is at EHV or HV and in some cases LV for large LV metering point arrangements). These standards only apply to the circumstances where the Electricity Distributor is carrying out the energisations.

- 9.19 Energisation will be carried out only following instruction of the Customer's appointed electricity supplier and is subject to an electricity meter having been installed and all conditions precedent being fulfilled.
- 9.20 Relevant standards are ECGS7A-7C and ECDGS7A-7C. Relevant exemptions are 15(2) and 15(3) (Condition 5(2) and 5(3) in the DG Standards Direction) and 15(7) and 15(8) (Condition 5(7) and 5(8) in the DG Standards Direction). See also relevant Extensions of Time as they may apply, chapter 5.

## SLC 15 final works and phased energisation

### Completion of final works

- 9.21 The standards relating to final works are subject to the Customer ensuring that all "conditions precedent" are met. Further information on conditions precedent is outlined in chapter 4.
- 9.22 Where conditions precedent are met, the licensee is required to complete final works for low and high voltage connections within a prescribed timescale.
- 9.23 For extra high voltage connections the licensee is obliged to provide the Customer with the planned date for final works within a prescribed timescale. Additionally the licensee should complete final works at extra high voltage as soon as reasonably practicable.
- 9.24 SLC 15 requires that the licensee is obliged to use reasonable endeavours to meet the timescales prescribed for each standard. The timescales for completing final works or issuing dates for planned final works are determined based upon the voltage of the POC and any associated works.
- 9.25 The licensee's obligations are subject to any relevant exemptions.



**Guidance** – ~~RIIO-ED2 Regulatory Instructions and Guidance: Annex G – Connections v2.0~~  
~~RIIO-ED2 Regulatory Instructions and Guidance: Annex G – Connections v2.1~~

---

## Phased energisation

- 9.26 The standards relating to phased energisations are subject to the Customer ensuring that all "conditions precedent" are met. Further detail on conditions precedent is outlined in chapter 4.
- 9.27 Where all conditions precedent are met, the licensee is required to complete phased energisations at low voltage or high voltage within a prescribed timescale. SLC 15 requires that the licensee is obliged to use reasonable endeavours to meet the timescales prescribed for each standard. The timescales for completing phased energisations are determined based upon the specific works required to complete the phased energisation. This is separate to the classifications used to define categories for provision of quotations, design approvals and final works and so it is not necessarily determined based on voltage of POC or associated works.

## 10. Appendix 4 - Unmetered connections

### Quotations

- 10.1 Whilst most street lighting work is ordered and carried out to published standard charges, there are occasions where Relevant Authorities require bespoke quotations to be carried out by the Electricity Distributor.
- 10.2 Where there are some unmetered connections on a project with metered connections then the relevant metered connections standard would apply. For example, a new housing site requiring a substation would fall under the GSoP timescale of 35 Working Days. If the site required some street lighting and these were provided in the same quotation then this metered standard of 35 Working Days would apply.
- 10.3 If an application is received for a quotation >100 units or where HV works are required, then it will fall outside these standards but the Electricity Distributor will still provide a quotation in a reasonable timescale.
- 10.4 Relevant Standard is ECGS9. General exemptions may apply, see chapter 5.
- 10.5 Where a specific bi-lateral agreement is in place between the Electricity Distributor and the Relevant Authority then the above regulations do not apply.

### Unmetered (UMS) faults

- 10.6 In the first instance, the Relevant Authority should request the appropriate response time. However, the Electricity Distributor may reclassify the job, in agreement with the Relevant Authority. The job can be reclassified where the Electricity Distributor has attended on site and for example, may have found an emergency response call-out (for response in two hours) inappropriate, as there was no immediate danger to public or property, arising from the Electricity Distributor's electricity network (subject to agreement by the Relevant Authority).

**Guidance** – ~~RIIO-ED2 Regulatory Instructions and Guidance: Annex G – Connections~~  
~~Connections v2.0~~ [RIIO-ED2 Regulatory Instructions and Guidance: Annex G – Connections v2.1](#)

---

## Emergency response

**10.7** Emergency Response is where an Electricity Distributor is required to attend an unmetered connection location where it is necessary to remove immediate danger to the public or property arising from the electricity distribution network.

## High priority fault repair

**10.8** High Priority Fault Repair is a fault, which is considered to be urgent. For example, at the site of an accident black-spot, major road junction, or an Area of Public Order Concerns. This category is to be used sparingly by Relevant Authorities.

**10.9** These are differentiated as to whether or not traffic lights are affected by the fault.

## Single unit and multiple unit fault repairs

**10.10** Single Unit and Multiple Unit Fault Repairs are related to a report of a fault on service to one or more units respectively. This may be for example no current, low voltage, loss of neutral etc.

**10.11** Programmes of work by Electricity Distributors to replace obsolete cut-outs where the unit is not considered dangerous are excluded from this standard.

**10.12** Relevant standards for attending faults are ECGS8A, 8B, 8C, 8D and 8E. General exemptions may apply, see chapter 4.

**10.13** Where a specific bi-lateral agreement is in place between the Electricity Distributor and the Relevant Authority then the above regulations do not apply.

## New works order

**10.14** New Works Order may include new capital lighting schemes, provision of new connections, disconnections or transfers of existing connections, up to and

**Guidance – ~~RIIO-ED2 Regulatory Instructions and Guidance: Annex G – Connections~~  
~~Connections v2.0~~RIIO-ED2 Regulatory Instructions and Guidance: Annex  
 G – Connections v2.1**

---

including 100 units. Schemes of >100 units do not fall within the scope of these standards.

- 10.15 Application of Standards, disconnections and other activities specified, apply where they are necessary to facilitate the provision of a new connection. This would include disconnections associated with the provision of unmetered connections services.
- 10.16 Where orders are received from the Relevant Authority that includes a mix of new connections, transfers and disconnections then the whole order will be considered to be within the standards. If the order only includes disconnections then the order will be treated as outside of the standards. If an Electricity Distributor voluntarily agrees to apply the standards to all disconnections, then these will be considered to fall under the standards and be reported as such.
- 10.17 Orders should relate to units of work that are in the same or adjacent streets. Electricity Distributors may therefore not consider such orders to be covered by these standards if they are for geographically dispersed units of work on the same order. Electricity Distributors may also not consider orders to be covered by these standards if they appear to have been deliberately broken down into smaller orders by the Relevant Authorities unless for instance this has been done due to the timing of the Relevant Authorities build programme with a reasonable interval, for instance 1 month, between the phases.
- 10.18 If the Customer notifies the Electricity Distributor of a material change to any of the minimum information, (see chapter 5), before the Electricity Distributor has provided the service, then either the clock will be reset to zero.
- 10.19 In terms of unmetered connections, works may be ordered by the Relevant Authority by virtue of accepting a bespoke quotation (issued under ECGS9) or by issuing a works order and thereby accepting standard charges (and associated terms and conditions). In both cases it would be deemed that the regulations apply.

**Guidance** – ~~RIIO-ED2 Regulatory Instructions and Guidance: Annex G – Connections~~  
~~Connections v2.0~~ [RIIO-ED2 Regulatory Instructions and Guidance: Annex G – Connections v2.1](#)

---

10.20 Relevant Standards are ECGS10A and 10B. Relevant exemptions are 15(2), 15(3), 15(7) and 15(8). These specific exemptions may also apply to any of the Standards outlined in this chapter.

10.21 Where a specific bi-lateral agreement is in place between the Electricity Distributor and the Relevant Authority then the above regulations do not apply.

## **115% Volume Rate (Applicable to Unmetered New Works only)**

10.22 The volume of units ordered by a Customer for new works in any calendar month must not exceed 115% of either of the monthly average of new works units ordered and received by the Electricity Distributor from the Customer in the preceding calendar year or of the agreed annual forecast number of units associated with new works for 1-100 units divided by 12. The volume is calculated using the total number of units associated with new works for 1-100 units. If the volume of units ordered exceeds the 115% threshold, all subsequent units ordered in excess of that threshold in that calendar month may not be subject to the GSOP performance level targets but will count into the next year when considering monthly average of new works.

10.23 In the example below, the Customer can submit up to 978 units associated with new works jobs for 1-100 units in the month of May 2023. If the Customer wished to submit 1,000 units, then the standard would not apply for the order that took the number of units above 978 and all subsequent orders in that month. For example, the Customer had submitted 48 orders for May, with each order containing 20 units, taking the monthly total ordered for May to 960. The Customer then submits an order for 20 units, taking the total to 980. As this order exceeds the threshold of 978 units for May then it and all the 20 units contained within it, are not covered by the standards. If the Customer subsequently submits an order for two units (ie up to the threshold), then these 2 units would be covered by the standards.

**Guidance** – [RIIO-ED2 Regulatory Instructions and Guidance: Annex G – Connections v2.0](#)  
[RIIO-ED2 Regulatory Instructions and Guidance: Annex G – Connections v2.1](#)

Example:

Previous Calendar Year	Total Orders	Total Units
Jan-23	18	900
Feb-23	25	1,750
Mar-23	16	400
Apr-23	10	200
May-23	12	480
Jun-23	32	1,120
Jul-23	5	325
Aug-23	35	1,925
Sep-23	40	1,800
Oct-23	4	400
Nov-23	10	600
Dec-23	10	300
<b>TOTAL</b>		<b>10,200</b>
<b>Monthly average for previous 12 months</b>		<b>850</b>
<b>115% volume rate threshold (1.15*850)</b>		<b>978</b>

## 11. Appendix 5 - Overview of the Quotation Accuracy Scheme

- 11.1 ECGS2A (Regulation 5(2)) applies where the Electricity Distributor has provided the Customer with a quotation for a single LV single phase service demand connection. Where a Customer challenges the quotation provided under the quotation accuracy scheme and the quotation is found to have been inaccurate or incomplete, then the Electricity Distributor has to make a payment as prescribed by ECGS 11A (Regulation 7(3)) to the Customer. The applicable payment amount is determined by the date on which the inaccuracy or incompleteness of the quotation is confirmed by the Electricity Distributor. The Electricity Distributor must also, in accordance with the provisions of its quotation accuracy scheme, refund to the Customer any overpayment made by the Customer in respect of the quotation.
- 11.2 ECGS2B (Regulation 5(3)) applies where the Electricity Distributor has provided the Customer with a quotation for a small project demand connection. Where a Customer challenges the quotation provided under the quotation accuracy scheme and the quotation is found to have been inaccurate or incomplete, then the Electricity Distributor has to make a payment as prescribed by ECGS 11B (Regulation 7(4)) to the Customer. The applicable payment amount is determined by the date on which the inaccuracy or incompleteness of the quotation is confirmed by the Electricity Distributor. The Electricity Distributor must also, in accordance with the provisions of its quotation accuracy scheme, refund to the Customer any overpayment made by the Customer in respect of the quotation.

**Guidance** – [RIIO-ED2 Regulatory Instructions and Guidance: Annex G – Connections v2.0](#)  
[RIIO-ED2 Regulatory Instructions and Guidance: Annex G – Connections v2.1](#)

---

## 12. Appendix 6 - SLC 15A quarterly reporting template guidance

12.1 This appendix provides details of how to complete the reporting template for the Electricity Connection Guaranteed Standards. The reporting template will now form part of a large RIIO-ED2 RIGs reporting template. Ofgem may from time to time revise this guidance and the accompanying reporting template for these Standards, in line with regular RIGs procedure.

### Reporting code (ECGS no)

12.2 The Electricity Connections Guaranteed Standards number, as identified in the table outlining the Standards in Appendix 1 of this guidance document.

### Guaranteed Standard classification

12.3 This details the description of the relevant Guaranteed Standard classification of the individual market segments.

### Number of Passes

12.4 For each standard, this column records the number of instances where the relevant service timescales have been met within the particular quarter.

### Number of Exemptions

12.5 For each Standard, this column records for the particular quarter:

- the number of instances where the relevant service timescale was not met but where an exemption applies, and
- any situations where the service has not been provided but where an exemption applies (such as 'no action required').

12.6 Jobs against which an exemption has been invoked will be counted as a successful job for the purposes of the 90% pass rate calculation.



**Guidance** – [RHO-ED2 Regulatory Instructions and Guidance: Annex G – Connections Connections v2.0](#)  
[RHO-ED2 Regulatory Instructions and Guidance: Annex G – Connections v2.1](#)

---

## Number of Failures

12.7 For each Standard, this column records the number of instances where the relevant service timescale was not met and where an Exemption does not apply within the particular quarter.

## Total

12.8 For each Standard, these cells will auto-populate, via a summation of the corresponding inputs to give a total number of activities for the particular quarter.

## Value of penalties incurred (£)

12.9 For each Standard, this column records the total value of penalties incurred in Guaranteed Standards for failures that occurred in the particular quarter.

## Pass rate

12.10 The pass rate is calculated by the following formula for each of the three categorisation of services detailed in 3.7 of this document.

$$\frac{\text{Number of Passes} + \text{Number of Exemptions}}{\text{Number of Passes} + \text{Number of Exemptions} + \text{Number of Failures}}$$

12.11 The Quotation Accuracy Scheme and Failure to Make a Payment Standard are not included in the calculation of the 90% pass rate.

## Quotation Accuracy Scheme

### TOTAL Small-scale LV Quotations: Unsuccessful challenges

12.12 These cells are to be completed with the number of small scale LV quotations that are challenged under the Quotation Accuracy Scheme but were unsuccessful. Please note that these values should be the number of quotations that are challenged during the relevant quarter, as opposed to the number that were provided in the quarter that have also been challenged under the scheme.

**Guidance** – [RIIO-ED2 Regulatory Instructions and Guidance: Annex G – Connections Connections v2.0](#)  
[RIIO-ED2 Regulatory Instructions and Guidance: Annex G – Connections v2.1](#)

---

### **TOTAL Small-scale LV Quotations: Successful challenges**

12.13 These cells are to be completed with the number of small scale LV quotations that are challenged under the Quotation Accuracy Scheme and were successful. Please note that these values should be the number of quotations that are challenged during the relevant quarter, as opposed to the number that were provided in the quarter that have also been challenged under the scheme.

### **Payment Made (£)**

12.14 These cells must be completed with the total value of penalties incurred to Customers as identified in regulation 7(2) of the ECGS SI against those successful challenges against the Quotation Accuracy Scheme.

### **Failure to make payment**

#### **Number of exemptions invoked against the failure to make payment Standard**

12.15 For each standard, this column records the number of instances where the relevant service timescale was not met but where an Exemption applies within the particular quarter.

#### **Number of payments subsequently not made within Standard**

12.16 This cell should be populated with the number of occurrences of the licensee failing to make a Guaranteed Standard payment within the prescribed 10 days from the point at which the relevant service was completed. Please note that this number should refer to the number of payments that the licensee failed to make in the prescribed time during the quarter that is being reported on, not only where these failures relate to tasks/actions that were completed within the quarter that is being reported on.

#### **Total value of penalties incurred against Standard**

12.17 This column records the total value of penalties incurred against the "failure to make a payment" Standards in the particular quarter.

**Guidance** – [RlIO-ED2 Regulatory Instructions and Guidance: Annex G – Connections v2.0](#)  
[RlIO-ED2 Regulatory Instructions and Guidance: Annex G – Connections v2.1](#)

---

## 13. Appendix 7 - SLC 15 quarterly reporting template guidance

13.1 This appendix provides details of how to complete the reporting template for the standards set out in SLC 15. The reporting template will now form part of a large RlIO-ED2 RIGs reporting template. Ofgem may from time to time revise this guidance and the accompanying reporting template for these standards, in accordance with the process set out in the licence conditions.

### Number provided within timescale

13.2 For each standard, this column records the number of instances where the relevant service timescales have been met within the particular quarter.

### Number of exemptions

13.3 For each standard, this column records for the particular quarter:

- the number of instances where the relevant service timescale was not met but where an exemption applies, and
- any situations where the service has not been provided but where an exemption applies (such as 'no action required').

13.4 Jobs against which an exemption has been invoked will be counted as a successful job for the purposes of the 90% pass rate calculation.

### Number not provided within timescale

13.5 For each standard, this column records the number of instances where the relevant service timescale was not met and where an Exemption does not apply within the particular quarter.

### Number of designs approved/rejected

13.6 For each written response to a design submission, these columns records the number of instances where the design was approved or rejected.

### Total

**Guidance** – ~~RIIO-ED2 Regulatory Instructions and Guidance: Annex G – Connections~~  
~~Connections v2.0~~ [RIIO-ED2 Regulatory Instructions and Guidance: Annex G – Connections v2.1](#)

---

**13.7** For each Standard, these cells will auto-populate, via a summation of the corresponding inputs to give a total number of activities for the particular quarter.

**Pass rate**

**13.8** The pass rate is calculated by the following formula for each of the three categorisation of services detailed in 3.7 of this document.

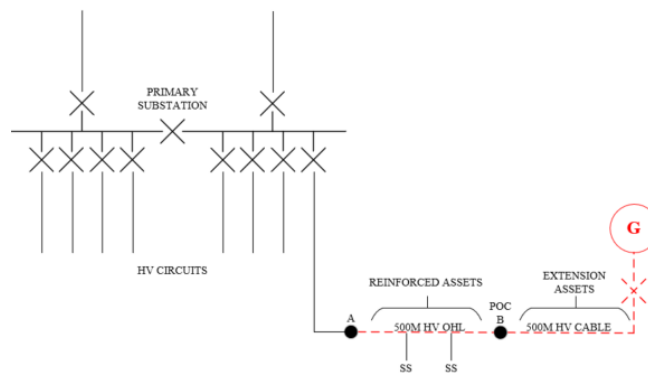
$$\frac{\text{Number of Passes} + \text{Number of Exemptions}}{\text{Number of Passes} + \text{Number of Exemptions} + \text{Number of Failures}}$$

**Guidance** – [RIIO-ED2 Regulatory Instructions and Guidance: Annex G – Connections v2.0](#)  
[RIIO-ED2 Regulatory Instructions and Guidance: Annex G – Connections v2.1](#)

## 14. Appendix 8 – Treatment of connection reinforcement

14.1 For reporting of Connections and Reinforcement the below scenarios provide details of where the costs and volumes should be reported.

### Scenario 1

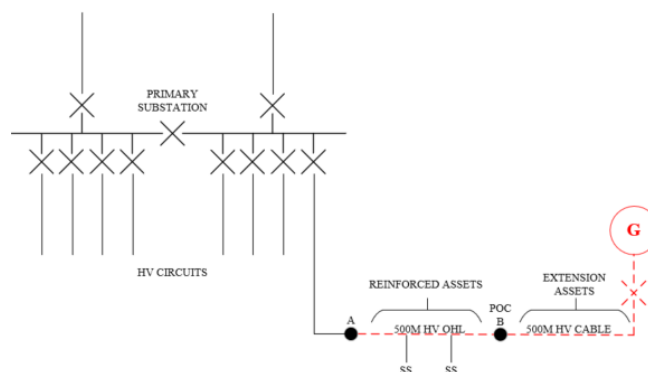


A new connection needs some reinforcement of the existing HV network to allow the connection to be made. Reinforcement is at the same voltage level as the Point of Connection

- Customer would pay a proportion of the reinforcement if it is a Generation Connection
- Customer would not pay for the Reinforcement if it was a Demand Connection

**Solution is Minimum Scheme so is Connections Reinforcement and therefore goes into C2 in the Costs, Volumes and Revenue Reporting Pack for both Demand and Generation Connections.**

### Scenario 2



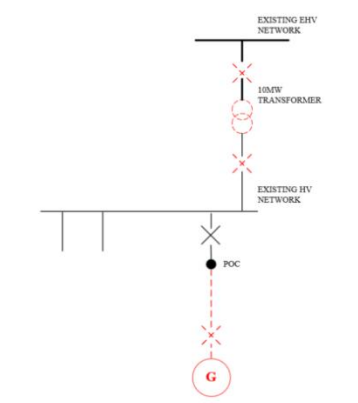
**Guidance** – [RIIO-ED2 Regulatory Instructions and Guidance: Annex G – Connections v2.0](#)  
[RIIO-ED2 Regulatory Instructions and Guidance: Annex G – Connections v2.1](#)

A new connection needs some reinforcement of the existing network to allow the connection to be made. If deciding to install bigger assets than needed to allow the connection (known as an Enhanced Scheme). Reinforcement is at the same voltage level as the Point of Connection

- Customer would pay a proportion (based on the Common Connections Charging methodology<sup>8</sup>) of the reinforcement if it is a Generation Connection
- Customer would not pay for the Reinforcement if it was a Demand Connection

**Solution is an Enhanced Scheme at Secondary Network and therefore is Connections Reinforcement and therefore goes into C2 for both Demand and Generation Connections.**

### Scenario 3



A new connection needs some reinforcement of the existing network to allow the connection to be made. For simplicity assuming that only the transformer needs changing.

Reinforcement is at the voltage level above the Point of Connection

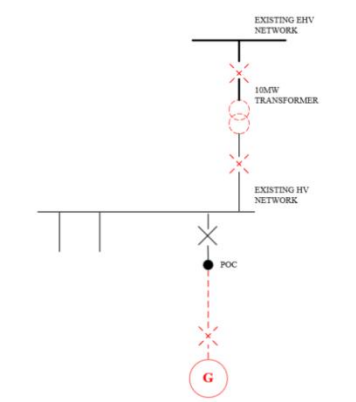
- Customer would not pay for the Reinforcement if it was a Demand Connection or if it was a Generation Connection

**Solution is on Primary Network but is Minimum Scheme so is Connections Reinforcement and therefore goes into C2 for both Demand and Generation Connections.**

<sup>8</sup> <https://www.ofgem.gov.uk/publications/common-connection-charging-methodology-governance>

**Guidance** – [RIIO-ED2 Regulatory Instructions and Guidance: Annex G – Connections v2.0](#)  
[RIIO-ED2 Regulatory Instructions and Guidance: Annex G – Connections v2.1](#)

## Scenario 4



A new connection needs some reinforcement of the existing network to allow the connection to be made. For simplicity assuming that only the transformer needs changing. If it is decided to install a bigger transformer than needed to allow the connection, this is known as an Enhanced Scheme.

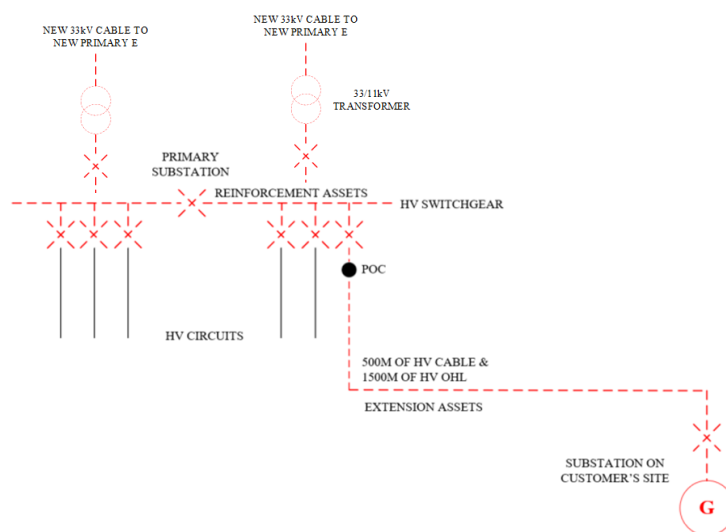
Reinforcement is at the voltage level above the Point of Connection

- Customer would not pay for the Reinforcement if it was a Demand Connection or if it was a Generation Connection

**Solution is on Primary Network, is an Enhanced Scheme but the assets are at the same voltage level as the Minimum Scheme (scenario 3) so is Connections Reinforcement and therefore goes into C2 for both Demand and Generation Connections.**

**Guidance** – [RIIO-ED2 Regulatory Instructions and Guidance: Annex G – Connections v2.0](#)  
[RIIO-ED2 Regulatory Instructions and Guidance: Annex G – Connections v2.1](#)

## Scenario 5



A new connection needs some reinforcement of the existing network to allow the connection to be made. The DNO decides to create a new Primary substation instead due to its assessment of future connections and/or load growth in the area.

Reinforcement is mainly at the voltage level above the Point of Connection

- Customer would not pay for the Reinforcement if it was a Demand Connection or if it was a Generation Connection

**Solution is on Primary Network, is an Enhanced Scheme but the assets are at the voltage level above the Minimum Scheme (scenario 1) so is General Reinforcement and therefore goes into CV1 for both Demand and Generation Connections.**